

营销网点

北京大区
北京
地址: 北京市海淀区首体南路6号
新世纪日航饭店写字楼955室
联系人: 董海生
电话: 18610034386

上海大区
上海
地址: 上海市闵行区江川路555号
联系人: 何宇新
电话: 13801792594

东北大区
沈阳
地址: 沈阳市铁西区虹桥路10-3号
(和皇家二期) 3号楼342室
联系人: 王超群
电话: 18640158897

华北大区
天津
地址: 天津市河东区月牙河南路
金月湾花园3-1002室
联系人: 马晓天
电话: 18622591956

太原
地址: 山西省太原市建设南路206号
中正花园二期4号楼1单元
2703号
联系人: 蔡一丁
电话: 15618658375

华中大区
武汉
地址: 武汉市武昌区中北路世纪
彩城祥苑1单元302室
联系人: 邹杰
电话: 13329704527

长沙
地址: 湖南省长沙市岳麓区许家洲路
106号兰亭湾畔二期C3栋
1904室
联系人: 陈永嘉
电话: 18674835655

郑州
地址: 郑州市郑东新区普惠路
2号新里·卢浮公馆二期
5号楼2单元14层189室
联系人: 印华
电话: 13311797637

华东大区
南京
地址: 江苏省南京市江宁区金源路
2号绿地城际空间站D1-1502
(南京南站南广场)
联系人: 曾照杨
电话: 15921956881

济南
地址: 山东省济南市槐荫区报业文苑
B区9号楼一单元1401室
联系人: 路永明
电话: 13671595429

西北大区
西安
地址: 陕西省西安市莲湖区唐延路北段
20号太和时代广场D座1209室
联系人: 何小盈
电话: 18049666056

东南大区
杭州
地址: 杭州市下城区白石路灯塔豪园
4幢1单元1203室
联系人: 谢钟
电话: 15601706655

西南大区
成都
地址: 四川省成都市武侯区锦尚西一路
107号楚峰国际中心大厦11层
1104室
联系人: 何焱
电话: 13708072843

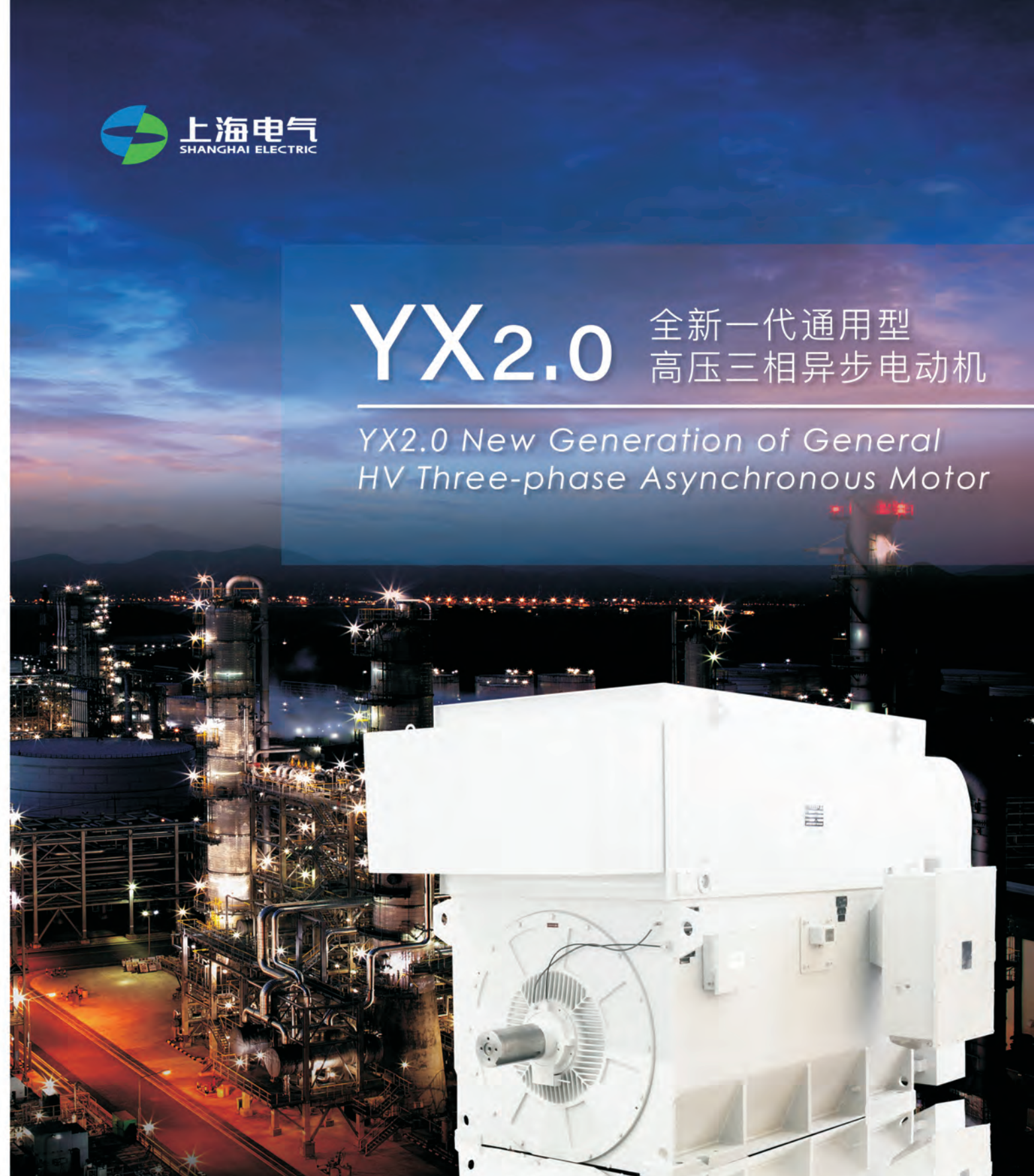
昆明
地址: 昆明市盘龙区北京路丽水雅苑
2栋703室
联系人: 熊伟
电话: 15285192820

华南大区
广州
地址: 广州市天河区林和东路
277号A5栋1401室
联系人: 王辉
电话: 13485375062



YX2.0 全新一代通用型 高压三相异步电动机

YX2.0 New Generation of General HV Three-phase Asynchronous Motor



上海电气集团上海电机厂有限公司
Shanghai Electric Machinery Co.,Ltd.

地址: 中国上海闵行江川路555号
ADD: 555 Jiangchuan Road, Minhang Shanghai China
电话(TEL): 021-64638221
传真(Fax): 021-64632422
客服电话(CSH): 4008803505
邮政(P.C): 200240
网址: <http://www.shanghai-electric.com>

扫码关注
上海电机厂
官方微信



上海电气集团上海电机厂有限公司
Shanghai Electric Machinery Co.,Ltd.

目录 CONTENTS

02

一、概述
Overview

03

二、基本信息
Essential information

04

三、型号说明
Type Designation

04

四、防护等级
及冷却方式
Degree of protection
and cooling method

06

五、基本结构
Fundamental
structure

08

六、轴承
Bearing

10

七、振动、噪音
Vibration, noise

12

八、注意事项
Attention

14

九、主要技术数据
Main technical data

27

十、外形图及安装尺寸表
Layout drawings and
dimensions



一、概述

OVERVIEW

YX2.0高压异步电动机系列是上海电气集团上海电机厂有限公司面向未来研发的全新一代高性能通用高压异步电动机产品系列，具有额定效率高，经济运行范围宽的优点，运行可靠，低振，低噪等，且产品交货期短。本系列产品致力于为合作伙伴提供全新的全生命周期使用体验，为合作伙伴提供经济高效的驱动应用解决方案。

YX2.0 HV asynchronous motor series refer to new generation of general HV asynchronous motor product series with high performance researched and developed for the future by Shanghai Electric Machinery Co., Ltd. The series of products feature in high efficiency at rated point , wide range of economic operation, short delivery time, reliable operation, low vibration, and low noise. Moreover, they are designed to provide usage experience of new full life circle for partners, as well as economic and efficient driven application solutions.

行业应用及优势 Application in the industry and advantages

适用行业:

电力、冶金、矿山、石化、水利、建材、市政、军工、核电、科研、船舶等。

Applicable industries

Electric power, metallurgy, mining, petrochemical, water conservancy, building materials, municipal engineering, military industry, nuclear power, scientific research, marine and etc.

适用负载:

本系列电动机用于驱动各种通用机械，如鼓风机、压缩机、水泵、破碎机、皮带机及其它机械设备。

Applicable load

This series of motors are used to drive all kinds of common machinery, such as blowers, compressors, water pumps, crushers, belt conveyors and other mechanical equipment.

优势:

- 功率密度大，在狭小的空间内发挥强大的性能。
- 紧凑型设计，为用户提供更多的安装选择。
- 高效率的电气设计方案，极低的全生命周期运行成本。
- 低振动、低噪音以及严格可控的温升。
- 整机高可靠性、极长的使用寿命。
- 提供定制化的设计及制造。
- 模块化设计，增加备件通用性，减少运维成本。

Advantage

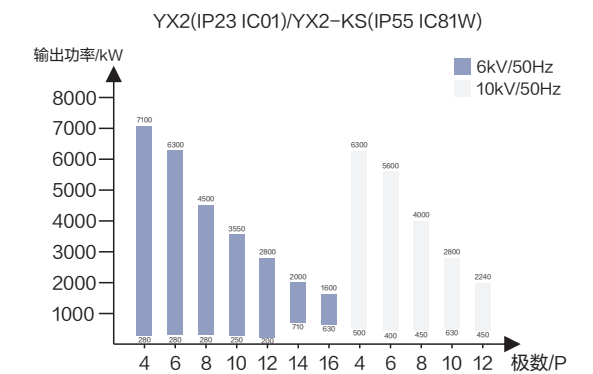
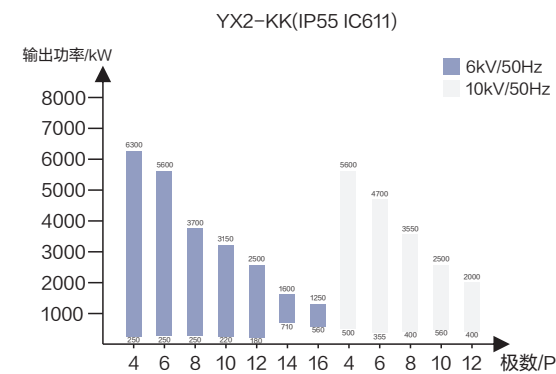
Large power density, able to output a powerful performance in a limited space.
Optimization design, with flexible installation.
Highly efficient electrical design with extremely low costs for full life cycle operating.
Low vibration, low noise and strictly controlled temperature rise.
High reliability and long lifetime.
Modula design conrenience the spars commonality and economical maintenance.

二、基本信息

ESSENTIAL INFORMATION

| 产品图片 Product picture | 产品参数 Product parameter |
|---|---|
|  | 中心高范围: 355mm-630mm Frame size: 355mm-630mm |
| | 功率范围: 180kW-7500kW Power range: 180kW-7500kW |
| | 极数范围: 2-16 Poles Range of pole number: 2-16 Poles |
| | 电压范围: 380V-13800V Voltage range: 380V-13800V |
| | 防护等级: IP23/IP55 Degree of protection: IP23/IP55 |
| | 冷却方式: IC611/IC81W/IC01/... Cooling mode: IC611/IC81W/IC01/... |
| 标准安装型式: IMB3/IM1001 卧式底脚安装 Standard mounting type: IMB3/IM1001 horizontal foot mounting. | 安装方式: 卧式/立式 Installation: Horizontal/vertical |
| 绝缘及温升等级: F/B Insulation and temperature rise grade: F/B | 适用标准: GB/IEC Applicable standard: GB/IEC |
| | 运行方式: 直接驱动/变频驱动 Model of operation: Direct drive/variable frequency drive. |

功率范围: Power range



三、型号说明

TYPE DESIGNATION

YX2.0电机的型号遵循如下编码规则

The type of YX2.0 motor follows the following coding definition

示例: YX2 - KK450 - 4

- 1、YX2电机类型
- 2、KK冷却方式，KK表示空空冷、KS表示空水冷、缺省时表示开启式
- 3、450中心高，单位mm：355、400、450、500、560、630
- 4、4极极数

Example: YX2 - KK450 - 4

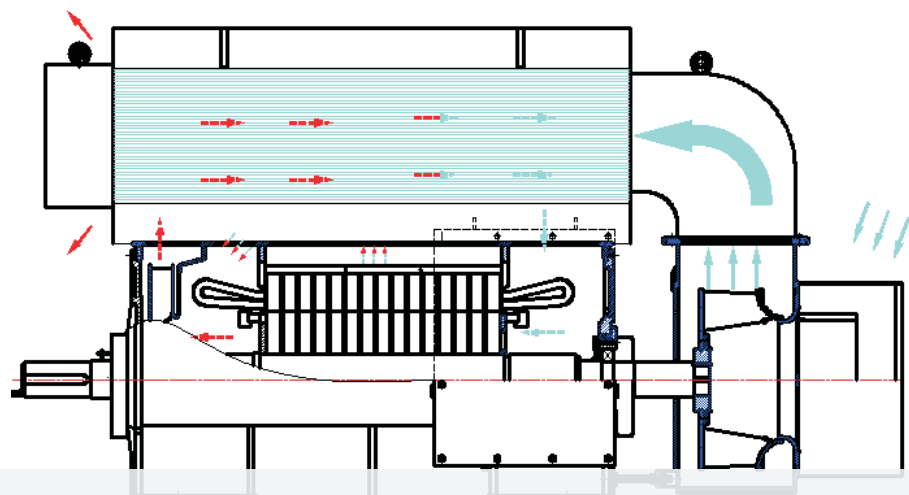
1. YX2 motor type
2. KK cooling mode, KK means air-air cooling, KS means air-water cooling, blank means open-type.
3. 450 center height, in the unit of mm: 355, 400, 450, 500, 560, 630.
4. The number of poles (4 poles)

四、防护等级及冷却方式

DEGREE OF PROTECTION AND COOLING METHOD

YX2.0系列电机标准组合:

Standard configuration of YX2.0 series motor



IC611/IP55

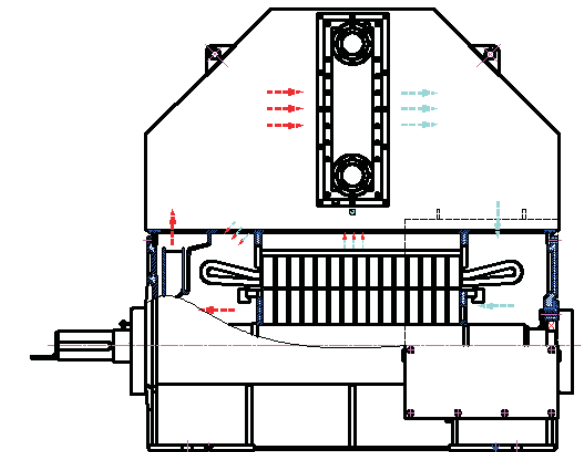
全封闭电机，装有一个空-空冷却器。
Fully enclosed motor with an air-air cooler.

电机能防止灰尘触及或接近机壳内带电或转动部分，且能承受任何方向的喷水。
The motor can prevent dust from touching or approaching the charged or rotating parts inside housing, and can withstand the water spray in any direction.

IC81W/IP55

全封闭结构，配有空气-水冷却器。
Fully enclosed structure with air-water cooler.

电机能防止灰尘触及或接近机壳内带电或转动部分，且能承受任何方向的喷水。
The motor can prevent dust from touching or approaching the charged or rotating parts inside housing and can withstand the water spray in any direction.



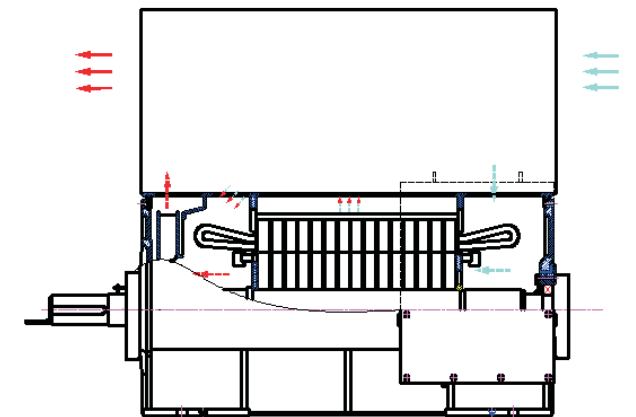
IC01/IP23

开启式冷却，电机在轴上安装有一个内冷却风扇。

Open-type cooling. The motor is provided with an internal cooling fan on the shaft.

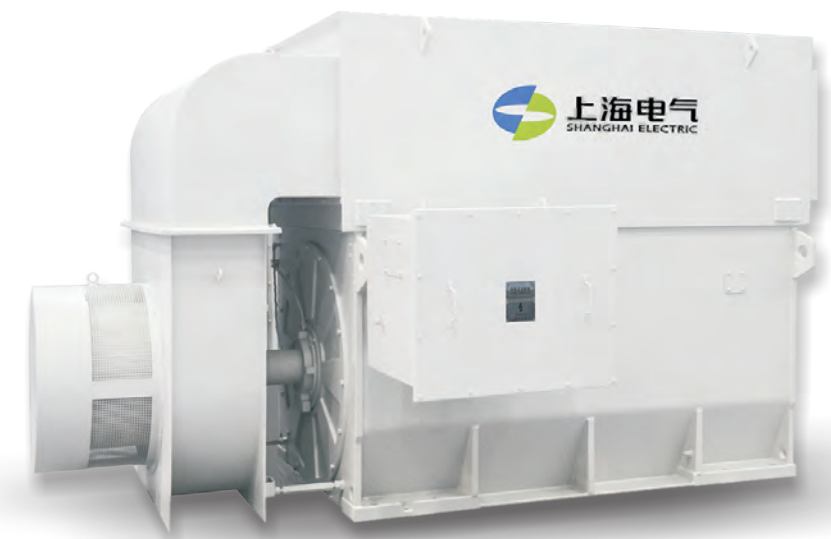
阻挡气载颗粒进入直接通往电机带电部分的内部风路。电机具有防溅功能，能承受来自任何方向的溅水。

The airborne particles into the internal wind path which directly to the charged part of the motor can be blocked. The motor has anti-splatter function and can withstand the splash from any direction.



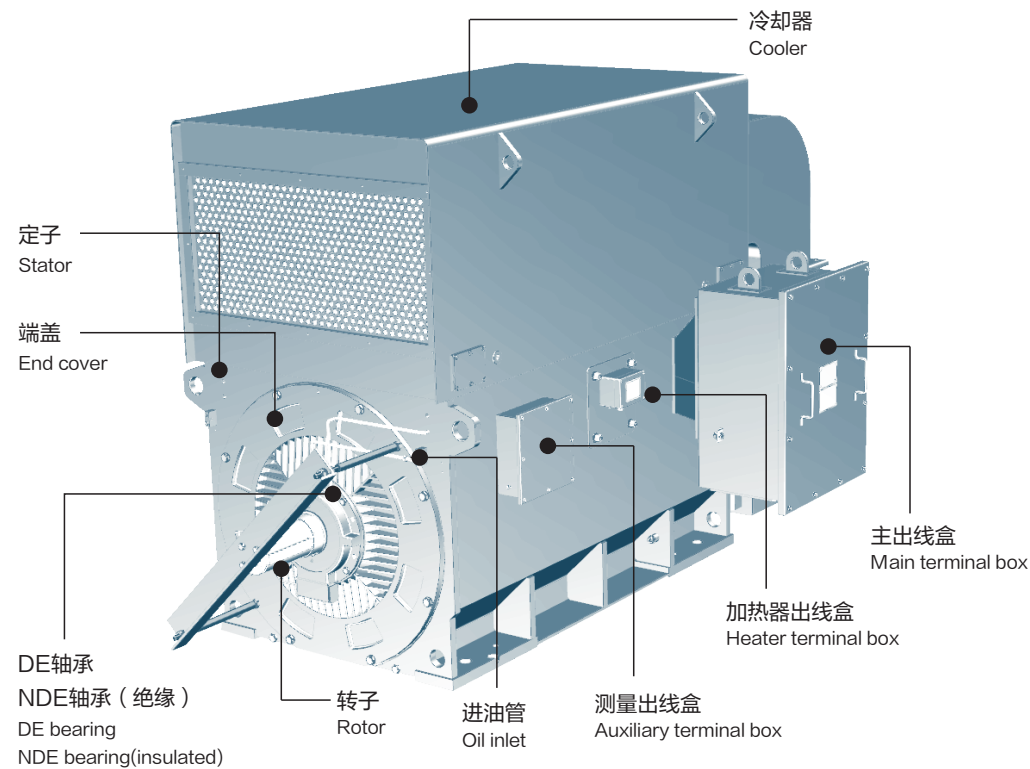
注：本系列电动机可根据用户要求制成其他防护等级、冷却方式的电动机。

Note: The YX2.0 series can provide other customized protection degree and cooling method.



五、基本结构

FUNDAMENTAL STRUCTURE

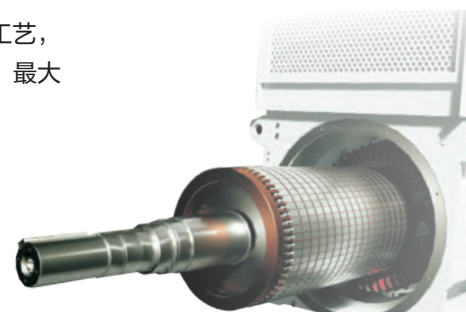


本系列中，轴承为滚动轴承脂润滑结构，设有不停机注排油装置。电机也可根据用户要求采用滑动轴承结构，滑动轴承结构的电机根据电机中心高及转速分为自润滑及强迫油润滑两种方式，稀油润滑站由用户自备（除非订货合同中另有规定）。

It adopts rolling bearings with grease lubrication and provided with non-stop oil injection and discharge devices in basic series. The motor can adopt sliding bearing if required by the user. The sliding bearing structure can be divided into self-lubricating and forced lubricating according to the motor shaft center height and speed. Thin oil lubricating station shall be provided by the user (unless otherwise specified in order specification).

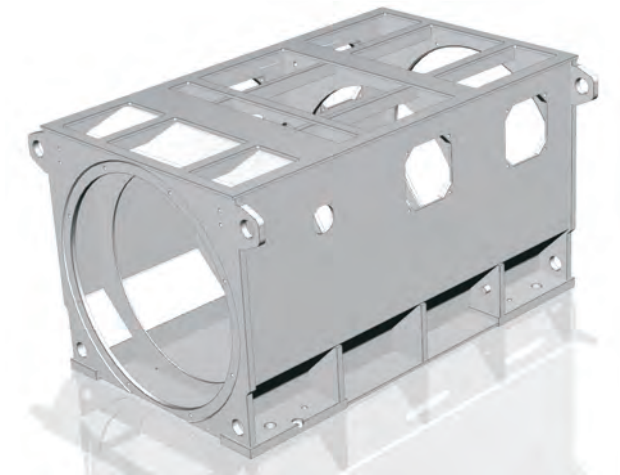
转子采用铜排结构，转子铜排和端环采用先进可靠的焊接工艺，并经专用的转子铜排滚挤机在转子槽口处对铜排进行紧固处理，最大程度地避免了由于转子铜排松动造成的转子断排的可能性。

Rotor adopts copper bar structure. Advanced reliable welding process are applied to rotor copper bars and end links, moreover, copper bars are fastened at rotor slots with special rotor copper bar roller squeezers so as to maximally avoid possibility of breaking rotors arising from looseness of rotor copper bars.



本系列电动机采用箱式结构，机座采用钢板焊接而成，重量轻、刚度好；基本安装型式为卧式带底脚结构IMB3，符合GB997和IEC60034-7《旋转电机结构及安装型式（IM代号）》的规定。

The series of motors adopt box-type structure. The frames are welded with steel plates which can perform light weight and proper rigidity. Basic installation type is horizontal type with foot structure IMB3, conforming to the provisions in GB997 and IEC60034-7 (IM code).



本系列中，端盖采用铸铁材质，降低结构振动，并通过特殊的结构设计，大幅提高轴承散热能力。

In the basic series, the end cover is made of cast iron to reduce structural vibration, and through special structural design, the heat dissipation capacity of bearing is greatly improved.



主出线盒防护等级为IP55，无特殊注明时装于电动机右侧（面对电动机主轴伸端看）。根据用户要求，电动机可带中性点出线盒，中性点出线盒装在主出线盒对面（电动机另一侧），防护等级为IP55。对于功率在2000kW及以上的电动机，可按订货要求在中性点出线盒里安装电流互感器（CT）供差动保护用。出线盒内、外均设有单独的接地端子。主出线盒可以90°、180°、270°、360°旋转。

Degree of protection of main terminal box is IP55. Unless otherwise specified, the terminal box will be installed on the right side of motor (View from DE to NDE) can be provided with neutral terminal box of IP55 degree of protection if required by the user. Neutral terminal box will be installed on opposite to main terminal box (on the other side of motors). In terms of motors with power of 2000kW and above, the neutral terminal box can be provided with current transformer (CT) for differential protection according to order requirements. Earth terminals shall be respectively placed inside and outside of terminal box. Main terminal box can be rotated at 90°, 180°, 270° and 360°.

定子绕组、轴承均带双支铂电阻测温元件，分度号为Pt100，绕组每相两只共六只，轴承每个一只。

Stator winding assembly and bearing are provided with dual type platinum resistance temperature measuring elements with graduation number of Pt100. Total number of PT100 for winding assembly are six, with 2 per phase, while one number of PT100 for each bearing.

电动机带防潮加热器（停机用）。

The motor is provided with anti-condensation heater (Switch on when motor shutdown).

六、轴承

BEARING

滚动轴承标准配置表单

Standard configuration form of rolling bearings

| 中心高 Frame size | 极数 Number of poles | DE轴承 DE bearing | NDE轴承 NDE bearing |
|-------------------|-----------------------|--------------------|----------------------|
| 355 | ≥4P | 6222/C3 | 6219/C3 |
| 400 | ≥4P | 6224/C3 | 6222/C3 |
| 450 | ≥4P | 6326/C3 | 6322/C3 |
| 500 | ≥4P | 6330/C3 | 6326/C3 |
| 560 | 4P | 6034/C3+NU1034/C3 | NU1034/C3 |
| | ≥6P | 6038/C3+NU1038/C3 | NU1038/C3 |
| 630 | 4P | 6038/C3+NU1038/C3 | NU1038/C3 |
| | ≥6P | 6044/C3+NU1044/C3 | NU1044/C3 |

轴承选型计算主要考虑电机自身正常运转时轴承承受的载荷情况，而不考虑电机承受外部轴向或径向作用力。如产品设计选型时有特殊情况存在，如电机承受外部轴向或径向作用力、倾斜安装等，需重新进行轴承选型计算。

The calculation of bearing selection mainly considers the load of the bearing when the motor is running normally instead of considering external axial or radial forces which the motor should bear. In case special situation exists in product design selection, such as the motor withstands external axial or radial forces, oblique installation, etc., then the bearing selection should be re-calculated.

卧式电机的轴承寿命根据ISO281:1990来计算。基本额定寿命L10h是指在额定轴承负荷额定转速下，其中90%的轴承能回转到因转动疲劳而引起材料损伤之前的总运转小时数。YX2.0系列产品配套滚动轴承选型时，轴承基本额定寿命大多数可超过10万小时，不低于5万小时。

The service life of the bearing of horizontal motor is calculated according to ISO281:1990. The basic rating life L10h refers to that 90% of the bearings, at rated speed of rated bearing load, can return to total operating hours before material damage due to rotational fatigue. In the model selection of YX2.0 series products supporting rolling bearings, the basic rated life L 10h of most bearings can exceed 100,000 hours, not less than 50,000 hours.

润滑间隔和加脂量

Lubrication interval and relubrication amount

| 轴承型号 Bearing model | 加脂量g Relubrication amount g | 电机工作转速r/min Working speed of motor r/min | | | | |
|-----------------------|--------------------------------|---|------|------|------|------|
| | | 3000 | 1500 | 1000 | 750 | ≤600 |
| | | 加脂时间间隔h Interval of relubrication h | | | | |
| 6219 | 30 | 1640 | 5030 | 6920 | 8130 | 8760 |
| 6222 | 40 | 1120 | 4100 | 6270 | 7440 | 8400 |
| 6224 | 45 | | 3680 | 5900 | 7160 | 8102 |
| 6322 | 60 | | 3400 | 5780 | 6950 | 7540 |
| 6324 | 70 | | 3040 | 5300 | 6630 | 7280 |
| 6326 | 80 | | 2700 | 4840 | 6380 | 7000 |
| 6328 | 90 | | 2380 | 4420 | 6040 | 6750 |
| 6330 | 105 | | 2110 | 4040 | 5760 | 6490 |
| NU1034 | 55 | — | | | | |
| NU1034+6034 | 55+55 | | 1500 | 2480 | 3880 | 5190 |
| NU1038 | 70 | | | | | |
| NU1038+6038 | 70+70 | | 1200 | 2020 | 3310 | 4530 |
| NU1044 | 95 | | | | | |
| NU1044+6044 | 95+95 | | 850 | 1450 | 2580 | 3660 |

注:

- 表中数据润滑间隔是一估算值，仅适用于轴承温度70℃及以下的工作状态，具体应用时，须根据不同的工作条件和轴承类型进行调整。
- 如果一个轴承装置中包含有多个轴承，而各轴承的加脂时间间隔不同，则补充润滑脂的时间间隔应取时间较短的。
- 如果一个轴承装置中配置有多个轴承，则总加脂量为单个轴承加脂量之和。

Note:

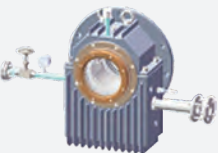
The lubrication interval of the data in the table is an estimated value, which is only applicable to the working status of the bearing with the temperature of 70°C or below. In the specific application, it shall be adjusted according to different working conditions and bearing types.

If a bearing device contains multiple bearings with different fatiquoring intervals for each bearing, the time interval for the supplement of lubricating grease shall be shorter.

If there are multiple bearings in a bearing device, the total fatiquoring amount is the sum of the fatiquoring amount of a single bearing.

滑动轴承标准配置表单

Standard configuration form of sliding bearings

| 示意图 Schematic diagram | 中心高 Center height | 极数 Number of poles | DE轴承 DE bearing | NDE轴承 NDE bearing | 润滑类型 Lubrication type |
|---|----------------------|-----------------------|--------------------|----------------------|----------------------------|
|  | 560 | 4P | DQ18-160A | DQ18-160AJ | 强迫润滑 Forced lubrication |
| | | ≥6P | DQ18-160A | DQ18-160AJ | 自润滑 Self-lubrication |
| | 630 | 4P | DQ18-180A | DQ18-180AJ | 强迫润滑 Forced lubrication |
| | | ≥6P | DQ18-200A | DQ18-200AJ | 强迫润滑 Forced lubrication |

注：如果环境温度超过40℃或者采用非标准配置请联系上电。

Note: if ambient temperature exceeds 40℃ or non-standard configuration is adopted, please contact Shanghai Electric Machinery Co., Ltd.

标准转子的轴向窜动为相对于机械中心±8mm，不允许连续施加轴向力，以确保转子位置不超出轴向窜动范围。

The axial movement of standard rotor is ±8mm relative to mechanical center. Continuous axial force is not allowed to be applied to ensure that the position of the rotor does not exceed the range of axial movement.

NDE滑动轴承内部是绝缘的，以避免轴电流对轴承造成伤害。

NDE sliding bearings are insulated internally to prevent shaft current from damaging the bearings.

润滑间隔和加油量见滑动轴承维护标牌。

For lubrication interval and oiling amount, please see sliding bearing maintenance label.

七、振动、噪音

VIBRATION, NOISE

本系列电机振动符合GB/T10068和IEC60034-14的规定，噪声符合GB10069.3和IEC60034-9的规定。

The vibration of the motor of this series conforms to the regulations in GB/T10068 and IEC60034-14, and the noise conforms to the regulations in GB10069.3 and IEC60034-9.

标准振动限值

Limiting value of standard vibration

| 振动等级 Vibration grade | 极数 Number of poles | 转速 Rpm | 振动速度 Vibration speed [mm/s] | 振动位移 Vibration displacement [μm] | 振动加速度 Vibration acceleration [m/s ²] | 最大轴相对位移 Maximum axis relative displacement [μm] | 最大径向跳动 Maximum radial runout [μm] |
|-------------------------|-----------------------|-----------------|--------------------------------|-------------------------------------|---|--|--------------------------------------|
| A | 2 | 1800 < n ≤ 3600 | 2.3 | 37 | 3.6 | 65 | 16 |
| | ≥ 4 | n ≤ 1800 | 2.3 | 37 | 3.6 | 90 | 23 |

注：1. 振动测量量值是电机轴承处的振动位移、速度和加速度（方均根值）以及电机轴承内部或附近的轴相对位移（峰峰值）。

Note: the measured value of vibration is the vibration displacement, velocity and acceleration (root-mean-square value) at the place where motor bearing is and relative axial displacement (peak-to-peak value) inside or near the motor bearing.

2. 测试条件是在电机空载运行，刚性安装情况下进行。

The test is carried out under the condition of no-load operation of the motor and rigid installation.

3. 根据中华人民共和国国家标准《GB/T6075.3-2011在非旋转部件上测量和评价机器的机械振动 第3部分：额定功率大于15kW额定转速在120r/min至15000r/min之间的在现场测量的工业机器(等同采用ISO10816-3:2009)》，对电机振动提出推荐性要求：在标准工况下，电动机负载运行时，振动强度的位移、速度限值分别是57 μm、4.5mm/s。

According to the State Standard of the People's Republic of China GB/T6075.3 2011, Measure and evaluate the mechanical vibration of the machine on non-rotating parts, part 3: industrial machinery, measuring on the site, with the rated speed between 120r/min and 15000r/min with rated power of more than 15 kw (equivalent to ISO10816-3:2009), recommended requirement for motor vibration is put forward: under standard operating conditions, when motor runs under load, the displacement, velocity limiting value of vibration intensity are 57 μm, 4.5mm/s respectively.

标准噪音限值

Limiting value of standard noise

空载最大A计权声功率级LwA (dB) (部分内容节选)

(冷却方式, IC的代码, 见GB/T1993-1993) (防护等级, IP的代码, 见GB/T4942.1-2006)

Maximum A-weighted sound power level, LwA in dB, at no-load (excerpts)

(Method of cooling, IC code, see GB/T1993-1993) (Method of protection, IP code, see GB/T4942.1-2006)

| 额定转速 Rated speed n/Nr/min | n _n ≤ 960 | | | 960 < n _n ≤ 1320 | | | 1320 < n _n ≤ 1900 | | | 1900 < n _n ≤ 2360 | | | 2360 < n _n ≤ 3150 | | | 3150 < n _n ≤ 3750 | | |
|---|---|-----|-----|-----------------------------|-----|-----|------------------------------|-----|-----|--|-----|-----|------------------------------|-----|-----|------------------------------|-----|-----|
| 冷却方式 IC 防护等级 IP | ① | ② | ③ | ① | ② | ③ | ① | ② | ③ | ① | ② | ③ | ① | ② | ③ | ① | ② | ③ |
| 额定输出 PN/kW(kVA) Out power PN/kW(kVA) | ①冷却方式IC01、IC11、IC21及防护等级IP22、IP23。 ②冷却方式IC411、IC511、IC611及防护等级IP44、IP55。 ③冷却方式IC31、IC71W、IC81W、IC8A1W7及防护等级IP44、IP55。 | | | | | | | | | IC code IC01、IC11、IC21 and IP code IP22、IP23。 IC code IC411、IC511、IC611 and IP code IP44、IP55。 IC code IC31、IC71W、IC81W、IC8A1W7 and IP code IP44、IP55。 | | | | | | | | |
| 1 ≤ P _N ≤ 220 | | | | | | | | | | | | | | | | | | |
| 220 < P _N ≤ 550 | 99 | 102 | 98 | 103 | 105 | 100 | 106 | 108 | 102 | 106 | 109 | 102 | 107 | 111 | 102 | 110 | 113 | 105 |
| 550 < P _N ≤ 1100 | 101 | 105 | 100 | 106 | 108 | 103 | 108 | 111 | 104 | 108 | 111 | 104 | 109 | 112 | 104 | 111 | 116 | 106 |
| 1100 < P _N ≤ 2200 | 103 | 107 | 102 | 108 | 110 | 105 | 109 | 113 | 105 | 109 | 113 | 105 | 110 | 113 | 105 | 112 | 118 | 107 |
| 2200 < P _N ≤ 5500 | 105 | 109 | 104 | 110 | 112 | 106 | 110 | 115 | 106 | 111 | 115 | 107 | 112 | 115 | 107 | 114 | 120 | 109 |

注：根据中华人民共和国国家标准《GB10069.3-2008旋转电机噪声测定方法及限值 第3部分：噪音限值》，噪音可用声功率级或声压级标识，单位均为分贝(dB)。电机噪音一般按照声功率级考核，声功率级和声压级数值根据电机大小(包络面面积)不同有较大差异，一般情况下声功率级比声压级数值大15~18分贝。

Note: According to the State Standard of the People's Republic of China GB10069.3 2008 the noise measurement method and limiting value of rotary motor; part 3: Limiting value of noise, noise may be identified by sound power level or sound pressure level, with the unit of dB. Motor noise is generally assessed according to sound power level, the values of sound power level and sound pressure level vary greatly according to the size (the area of the envelope) of motor and under normal circumstances, sound power level is 15 ~ 18 dB greater than the numerical value of sound pressure level.

八、注意事项

ATTENTION

电动机的起动 Start-up of motor

本系列电动机采用了先进的计算分析技术对电动机起动过程中每一点的定子绕组温升、转子铜排温度、端环温度等进行了详细的计算分析，确保电动机部件的最热点温度（如考虑起动集肤效应时转子铜排的最热点温度）在允许的范围内，避免了电动机因起动负荷过重而导致电动机早期损坏。

Advanced computational analysis technique has been applied in the series of motor to make detailed computational analysis of stator winding assembly temperature rise, rotor cooper bar temperature, end ring temperature at all points in motor starting process so as to ensure that temperature at the hottest point of motor component (e.g. consideration of hottest point temperature of the rotor copper bars in case of starting skin effect) is within acceptable limit and avoid motor from early damage arising from overload starting.

建议用户核查 Recommendation for customer checking

1、用户的电网应保证电动机在起动过程中的电动机端电压不低于额定电压的85%，在此条件下，水泵负载可直接选用样本中的各规格电动机。

The user shall make sure the power grid voltage is no less than 85% of motor rated voltage during starting process. Under the above condition.

2、对风机负载，除满足条件1外，当负载的阻力矩与转速的平方成正比并在起动终止达到电动机额定转速时，风机阻转矩小于电动机额定转矩的35%，电动机允许驱动的风机最大转动惯量见样本中所列值（风机转动惯量需折算到电动机转速）。

In terms of blower load, in case resistance torque of load is in direct proportion to speed and reaches rated speed of motors at the end of starting, fan resistance torque shall be less than 35% of rated torque of motors (in addition to satisfying condition 1); maximum allowable rotational inertia of fan driven by motors is shown in value listed in the sample (rotational inertia pf fan needs to be converted into motor speed).

注：在上述条件下，电动机允许在实际冷状态下连续起动两次，两次起动之间为自然停车，或在电动机热状态下起动一次。额外的再次起动应在电动机停车二小时以后进行。

Under the above-sated conditions, motors can be consecutively started for twice under actual cold state, naturally shut down between the two starting or started once under motor heat condition. Additional re-starting shall be conducted two hours after motor shutdown.

特殊要求 Special requirements

1. 对磨机、破碎机等重载起动的负载；
For load like mill, crusher and others.

2. 转动惯量超过技术数据表中Jload值的风机，或者开阀起动的风机；
Fan with rotational inertia exceeding value Jload in technical data sheet or fan subject to open valve starting.

3. 要求频繁起动的工况；
Operating conditions under which frequent starting is required.

4. 起动过程中电动机端电压小于额定电压的85%的情况；
Voltage at motor end is lower than 85% of rated voltage in starting process.

5. 特殊的电压等级和频率；
Special voltage class and frequency.

6. 对于效率、功率因数、最大转矩、启动转矩、最大电流有特殊要求；
Special requirements for efficiency, power factor, maximum torque, starting torque and maximum current.

7. 有其它特殊要求（如安装型式、防护等级、防腐要求、冷却方式、环境温度大于40℃或低于0℃、海拔高度大于1000m、电动机轴伸需承受联轴器以外的径向力或轴向力、自润滑等）；

Other special requirements (such as mounting type, degree of protection, requirements for anti-corrosion, cooling method, environmental temperature being more than 40℃ or lower than 0℃, altitude being higher than 1000m, radial force or axial force outside coupling born by motor shaft extension, and self-lubricating).

注：1. 有上述特殊要求的电机请在订货时提出并签订必要的技术协议。

Note: In case of above-stated special requirements, please put forward them and sign necessary technical agreement at the time of ordering for any of these motors.

2. 随着技术的进步和有关标准的修改，系列电机数据可能有一定更改，恕不另行通知，订货后请向本公司索取正式外形图。

With technical progress and modification of relevant standards, data of the series of motor are subject to change without further notice. Please ask the company for official outline drawings after ordering.

订货须知 Instructions to order

订货时请注明：
Please specify the following contents at the time of ordering:

| | | | |
|--|---|------------------------|-----------|
| 电动机型号 Motor type | YX2-KK500-4 | 额定功率 Rated power | 2500kW |
| 额定电压 Rated voltage | 6000V | 极数 Poles | 4极 |
| 额定频率 Rated frequency | 50Hz | 安装方式 Mounting type | IMB3 |
| 防护等级 Degree of protection | IP55 | 冷却方式 Cooling method | IC611 |
| 轴承形式 Type of bearing | 滚动轴承（进口/国产） Rolling bearing (imported/domestic) | 负载性质 Type of load | 风机 Fan |
| 环境条件 Environmental conditions | 海拔≤1000m，环境温度0℃~40℃ altitude ≤1000m; environment temperature: 0℃~40℃ | | |
| 旋转方向 Direction of rotation | 顺时针（从轴伸端看） clockwise (from shaft extension end) | | |
| 中性点出线盒位置 Position of neutral terminal box | 在主出线盒的对面 Opposite to main outlet box | | |

注：对于进口件，我公司仅采购该品牌产品而不限产地。如合同中未要求品牌则按本厂标准。

Note: In terms of imported parts, our company just purchase products of the brand and do not limit county of origin. Unless otherwise specified, the brand shall be adopted as per the standards of the plant.

九、主要技术数据

MAIN TECHNICAL DATA

6千伏空空冷 6kV Air-air cooling

| 型号 Type | 功率 Rated Power (kW) | 转速 Speed (r/min) | 效率 Efficiency (%) | | | 功率因数 Power Factor (cosφ) | | | 额定 电流 Rated Current (A) | 启动 电流 倍数 I _a | 空载 电流 I ₀ | 额定 转矩 Rated Torque (N·m) | 启动 转矩 倍数 T _{st} * | 最大 转矩 倍数 T _m * | 转子转动 惯量 Moment of Inertia (kg·m ²) | 电机 总重 Weight (kg) |
|--------------|---------------------------|------------------------|----------------------|-------------|-------------|-----------------------------|-------------|-------------|----------------------------------|----------------------------------|----------------------------|-----------------------------------|-------------------------------------|------------------------------------|--|----------------------------|
| | | | 100% Load | 75% Load | 50% Load | 100% Load | 75% Load | 50% Load | | | | | | | | |
| YX2-KK355-4 | 250 | 1485 | 94.3% | 94.4% | 93.6% | 0.877 | 0.845 | 0.764 | 29.1 | 6.5 | 10.0 | 1608 | 0.8 | 2.8 | 5.6 | 2410 |
| YX2-KK355-4 | 280 | 1483 | 94.2% | 94.5% | 93.9% | 0.884 | 0.860 | 0.791 | 32.3 | 6.0 | 10.0 | 1804 | 0.7 | 2.4 | 5.6 | 2530 |
| YX2-KK355-4 | 315 | 1483 | 94.6% | 94.8% | 94.4% | 0.890 | 0.868 | 0.804 | 36.0 | 6.0 | 10.6 | 2029 | 0.7 | 2.4 | 6.4 | 2660 |
| YX2-KK355-4 | 355 | 1480 | 94.4% | 94.8% | 94.6% | 0.894 | 0.880 | 0.827 | 40.5 | 5.0 | 10.6 | 2290 | 0.6 | 2.2 | 6.4 | 2705 |
| YX2-KK355-4 | 400 | 1483 | 94.7% | 95.1% | 94.7% | 0.875 | 0.847 | 0.771 | 46.5 | 6.0 | 15.2 | 2576 | 0.7 | 2.4 | 6.4 | 2750 |
| YX2-KK355-4 | 450 | 1486 | 95.3% | 95.5% | 95.1% | 0.873 | 0.839 | 0.755 | 52.1 | 6.5 | 18.2 | 2893 | 0.9 | 2.8 | 8.0 | 2795 |
| YX2-KK355-4 | 500 | 1485 | 95.5% | 95.7% | 95.4% | 0.879 | 0.849 | 0.770 | 57.3 | 6.5 | 19.1 | 3215 | 0.8 | 2.6 | 8.8 | 2840 |
| YX2-KK355-4 | 560 | 1486 | 95.7% | 95.9% | 95.7% | 0.881 | 0.852 | 0.775 | 64.0 | 6.5 | 20.9 | 3600 | 0.8 | 2.6 | 9.5 | 2890 |
| YX2-KK355-6 | 250 | 991 | 94.4% | 94.4% | 93.5% | 0.835 | 0.786 | 0.681 | 30.5 | 6.5 | 13.0 | 2410 | 1.0 | 2.8 | 9.3 | 2570 |
| YX2-KK355-6 | 280 | 989 | 94.3% | 94.5% | 93.8% | 0.848 | 0.808 | 0.714 | 33.7 | 6.0 | 13.0 | 2703 | 0.9 | 2.6 | 9.3 | 2650 |
| YX2-KK355-6 | 315 | 990 | 94.6% | 94.7% | 94.1% | 0.844 | 0.802 | 0.704 | 38.0 | 6.5 | 15.1 | 3040 | 0.9 | 2.6 | 10.3 | 2730 |
| YX2-KK355-6 | 355 | 991 | 94.9% | 94.9% | 94.2% | 0.827 | 0.776 | 0.668 | 43.5 | 6.5 | 19.0 | 3423 | 1.0 | 2.8 | 11.3 | 2810 |
| YX2-KK355-6 | 400 | 991 | 95.4% | 95.4% | 94.7% | 0.824 | 0.772 | 0.663 | 49.0 | 6.5 | 21.6 | 3854 | 1.0 | 2.8 | 13.4 | 2970 |
| YX2-KK355-6 | 450 | 991 | 95.6% | 95.6% | 94.9% | 0.822 | 0.770 | 0.660 | 55.2 | 6.5 | 24.4 | 4337 | 1.0 | 2.8 | 14.4 | 3060 |
| YX2-KK355-8 | 250 | 741 | 94.2% | 94.3% | 93.7% | 0.796 | 0.745 | 0.635 | 32.1 | 5.5 | 14.6 | 3223 | 0.9 | 2.2 | 12.4 | 2840 |
| YX2-KK355-8 | 280 | 741 | 94.4% | 94.6% | 94.1% | 0.799 | 0.751 | 0.644 | 35.7 | 5.0 | 15.8 | 3611 | 0.8 | 2.2 | 13.4 | 2935 |
| YX2-KK355-8 | 315 | 741 | 94.5% | 94.8% | 94.3% | 0.799 | 0.751 | 0.645 | 40.2 | 5.0 | 17.7 | 4062 | 0.8 | 2.2 | 14.5 | 3030 |
| YX2-KK400-4 | 630 | 1485 | 95.1% | 95.2% | 94.7% | 0.884 | 0.861 | 0.795 | 72.1 | 6.0 | 21.7 | 4051 | 0.6 | 2.4 | 11.7 | 3250 |
| YX2-KK400-4 | 710 | 1485 | 95.3% | 95.5% | 95.1% | 0.890 | 0.871 | 0.811 | 80.6 | 5.5 | 22.6 | 4567 | 0.6 | 2.4 | 12.8 | 3355 |
| YX2-KK400-4 | 800 | 1485 | 95.4% | 95.7% | 95.4% | 0.892 | 0.875 | 0.817 | 90.4 | 5.5 | 24.8 | 5146 | 0.6 | 2.4 | 14.0 | 3460 |
| YX2-KK400-4 | 900 | 1485 | 95.7% | 96.0% | 95.7% | 0.889 | 0.870 | 0.811 | 101.8 | 5.5 | 28.6 | 5788 | 0.6 | 2.4 | 15.1 | 3565 |
| YX2-KK400-4 | 1000 | 1488 | 96.1% | 96.2% | 95.6% | 0.850 | 0.807 | 0.708 | 117.8 | 7.0 | 46.6 | 6417 | 0.9 | 3.0 | 17.4 | 3780 |
| YX2-KK400-6 | 500 | 990 | 95.3% | 95.4% | 94.9% | 0.805 | 0.758 | 0.652 | 62.7 | 5.5 | 27.3 | 4825 | 0.8 | 2.4 | 16.2 | 3285 |
| YX2-KK400-6 | 560 | 989 | 95.5% | 95.6% | 95.2% | 0.812 | 0.768 | 0.667 | 69.5 | 5.5 | 29.1 | 5405 | 0.8 | 2.2 | 17.7 | 3390 |
| YX2-KK400-6 | 630 | 989 | 95.6% | 95.8% | 95.4% | 0.811 | 0.768 | 0.667 | 78.2 | 5.5 | 32.6 | 6082 | 0.8 | 2.2 | 19.1 | 3495 |
| YX2-KK400-6 | 710 | 989 | 95.8% | 96.0% | 95.8% | 0.835 | 0.803 | 0.717 | 85.4 | 5.0 | 31.1 | 6856 | 0.7 | 2.0 | 22.0 | 3700 |
| YX2-KK400-8 | 355 | 743 | 95.1% | 95.2% | 94.7% | 0.804 | 0.749 | 0.634 | 44.7 | 6.0 | 20.7 | 4564 | 0.9 | 2.6 | 20.2 | 3270 |
| YX2-KK400-8 | 400 | 742 | 94.9% | 95.3% | 95.0% | 0.820 | 0.775 | 0.671 | 49.5 | 5.5 | 20.7 | 5150 | 0.8 | 2.2 | 20.2 | 3360 |
| YX2-KK400-8 | 450 | 742 | 95.2% | 95.5% | 95.2% | 0.818 | 0.776 | 0.677 | 55.6 | 5.0 | 22.7 | 5795 | 0.7 | 2.2 | 21.9 | 3470 |
| YX2-KK400-8 | 500 | 742 | 95.3% | 95.6% | 95.2% | 0.810 | 0.765 | 0.661 | 62.4 | 5.0 | 26.5 | 6437 | 0.7 | 2.2 | 23.6 | 3570 |
| YX2-KK400-10 | 220 | 592 | 93.8% | 94.0% | 93.2% | 0.717 | 0.654 | 0.534 | 31.5 | 4.5 | 17.0 | 3547 | 0.6 | 2.0 | 17.0 | 3130 |
| YX2-KK400-10 | 250 | 592 | 94.1% | 94.2% | 93.5% | 0.710 | 0.647 | 0.527 | 36.0 | 4.0 | 19.6 | 4030 | 0.6 | 2.0 | 18.6 | 3235 |
| YX2-KK400-10 | 280 | 593 | 94.2% | 94.2% | 93.3% | 0.694 | 0.625 | 0.502 | 41.2 | 4.5 | 23.6 | 4510 | 0.6 | 2.0 | 20.3 | 3340 |
| YX2-KK400-10 | 315 | 592 | 94.0% | 94.1% | 93.3% | 0.693 | 0.627 | 0.506 | 46.5 | 4.0 | 26.2 | 5078 | 0.6 | 1.8 | 22.0 | 3430 |

| 型号 Type | 功率 Rated Power (kW) | 转速 Speed (r/min) | 效率 Efficiency (%) | | | 功率因数 Power Factor (cosφ) | | | 额定 电流 Rated Current (A) | 启动 电流 倍数 I _a | 空载 电流 I ₀ | 额定 转矩 Rated Torque (N·m) | 启动 转矩 倍数 T _{st} * | 最大 转矩 倍数 T _m * | 转子转动 惯量 Moment of Inertia (kg·m ²) | 电机 总重 Weight (kg) |
|--------------|---------------------------|------------------------|----------------------|-------------|-------------|-----------------------------|-------------|-------------|----------------------------------|----------------------------------|----------------------------|-----------------------------------|-------------------------------------|------------------------------------|--|----------------------------|
| | | | 100% Load | 75% Load | 50% Load | 100% Load | 75% Load | 50% Load | | | | | | | | |
| YX2-KK400-10 | 355 | 592 | 94.2% | 94.4% | 93.7% | 0.703 | 0.643 | 0.525 | 51.6 | 4.0 | 27.7 | 5727 | 0.6 | 1.8 | 23.6 | 3530 |
| YX2-KK400-12 | 180 | 492 | 93.2% | 93.7% | 93.4% | 0.736 | 0.693 | 0.588 | 25.3 | 3.5 | 11.7 | 3495 | 0.5 | 1.6 | 20.3 | 3310 |
| YX2-KK400-12 | 200 | 492 | 93.5% | 94.0% | 93.6% | 0.726 | 0.679 | 0.571 | 28.3 | 3.5 | 13.6 | 3881 | 0.6 | 1.6 | 22.0 | 3420 |
| YX2-KK400-12 | 224 | 493 | 93.6% | 93.9% | 93.4% | 0.710 | 0.656 | 0.541 | 32.4 | 4.0 | 16.7 | 4343 | 0.6 | 1.6 | 23.7 | 3530 |
| YX2-KK450-4 | 1120 | 1487 | 95.7% | 95.8% | 95.3% | 0.886 | 0.868 | 0.808 | 127.1 | 5.5 | 35.8 | 7195 | 0.6 | 2.2 | 24.3 | 4520 |
| YX2-KK450-4 | 1250 | 1488 | 96.0% | 96.0% | 95.5% | 0.874 | 0.848 | 0.776 | 143.4 | 6.0 | 45.5 | 8025 | 0.6 | 2.4 | 26.3 | 4660 |
| YX2-KK450-4 | 1400 | 1488 | 96.2% | 96.3% | 95.8% | 0.876 | 0.849 | 0.776 | 159.8 | 6.5 | 51.2 | 8983 | 0.7 | 2.6 | 30.3 | 4940 |
| YX2-KK450-4 | 1600 | 1489 | 96.5% | 96.5% | 96.1% | 0.863 | 0.829 | 0.743 | 184.8 | 7.0 | 65.7 | 10260 | 0.7 | 2.8 | 34.2 | 5210 |
| YX2-KK450-6 | 800 | 991 | 95.9% | 96.0% | 95.6% | 0.831 | 0.794 | 0.702 | 96.6 | 5.5 | 37.1 | 7709 | 0.6 | 2.2 | 29.5 | 4330 |
| YX2-KK450-6 | 900 | 991 | 96.1% | 96.3% | 96.0% | 0.860 | 0.837 | 0.766 | 104.8 | 5.0 | 33.3 | 8676 | 0.6 | 2.2 | 34.8 | 4590 |
| YX2-KK450-6 | 1000 | 991 | 96.2% | 96.4% | 96.1% | 0.850 | 0.820 | 0.739 | 117.7 | 5.5 | 40.7 | 9635 | 0.6 | 2.2 | 37.5 | 4720 |
| YX2-KK450-6 | 1120 | 992 | 96.3% | 96.5% | 96.1% | 0.830 | 0.790 | 0.694 | 134.9 | 5.5 | 53.1 | 10784 | 0.7 | 2.4 | 40.1 | 4850 |
| YX2-KK450-6 | 1250 | 992 | 96.5% | 96.6% | 96.2% | 0.822 | 0.778 | 0.676 | 151.6 | 6.0 | 62.8 | 12029 | 0.7 | 2.4 | 45.4 | 5120 |
| YX2-KK450-8 | 560 | 742 | 95.3% | 95.6% | 95.3% | 0.825 | 0.787 | 0.692 | 68.5 | 5.0 | 26.9 | 7210 | 0.7 | 2.2 | 34.4 | 4280 |
| YX2-KK450-8 | 630 | 742 | 95.5% | 95.7% | 95.4% | 0.823 | 0.785 | 0.689 | 77.2 | 5.0 | 30.4 | 8112 | 0.7 | 2.2 | 37.5 | 4410 |
| YX2-KK450-8 | 710 | 742 | 95.5% | 95.8% | 95.5% | 0.813 | 0.769 | 0.668 | 88.0 | 5.5 | 36.6 | 9138 | 0.8 | 2.2 | 40.6 | 4540 |
| YX2-KK450-8 | 800 | 742 | 95.7% | 96.0% | 95.7% | 0.825 | 0.787 | 0.691 | 97.4 | 5.5 | 38.3 | 10295 | 0.8 | 2.2 | 46.7 | 4800 |
| YX2-KK450-8 | 900 | 743 | 95.9% | 96.2% | 95.8% | 0.818 | 0.775 | 0.675 | 110.4 | 5.5 | 45.4 | 11576 | 0.8 | 2.2 | 52.9 | 5060 |
| YX2-KK450-10 | 400 | 593 | 95.0% | 95.2% | 94.9% | 0.791 | 0.744 | 0.637 | 51.2 | 5.0 | 22.7 | 6443 | 0.7 | 2.0 | 37.6 | 4830 |
| YX2-KK450-10 | 450 | 593 | 95.1% | 95.3% | 94.9% | 0.782 | 0.731 | 0.620 | 58.3 | 5.0 | 26.8 | 7246 | 0.7 | 2.2 | 40.7 | 4950 |
| YX2-KK450-10 | 500 | 594 | 95.1% | 95.3% | 94.7% | 0.755 | 0.693 | 0.573 | 67.0 | 5.0 | 34.2 | 8044 | 0.8 | 2.2 | 43.8 | 5070 |
| YX2-KK450-10 | 560 | 593 | 95.2% | 95.5% | 95.2% | 0.797 | 0.752 | 0.649 | 71.1 | 5.0 | 30.5 | 9019 | 0.7 | 2.0 | 50.0 | 1590 |
| YX2-KK450-10 | 630 | 593 | 95.3% | 95.5% | 95.1% | 0.768 | 0.715 | 0.602 | 82.9 | 5.0 | 39.3 | 10144 | 0.7 | 2.0 | 50.0 | 5350 |
| YX2-KK450-12 | 280 | 493 | 94.2% | 94.5% | 94.0% | 0.763 | 0.703 | 0.584 | 37.5 | 5.0 | 18.8 | 5425 | 1.1 | 2.2 | 37.7 | 4790 |
| YX2-KK450-12 | 315 | 493 | 94.3% | 94.6% | 94.2% | 0.764 | 0.706 | 0.589 | 42.1 | 5.0 | 20.8 | 6104 | 1.0 | 2.2 | 40.8 | 4920 |
| YX2-KK450-12 | 355 | 493 | 94.4% | 94.7% | 94.3% | 0.761 | 0.702 | 0.584 | 47.5 | 5.0 | 23.7 | 6878 | 1.1 | 2.2 | 43.9 | 5050 |
| YX2-KK450-12 | 400 | 493 | 94.6% | 94.8% | 94.3% | 0.746 | 0.683 | 0.561 | 54.6 | 5.0 | 28.4 | 7747 | 1.1 | 2.2 | 47.0 | 5180 |
| YX2-KK450-12 | 450 | 494 | 94.6% | 94.7% | 94.1% | 0.716 | 0.644 | 0.517 | 64.0 | 5.0 | 36.4 | 8708 | 1.2 | 2.4 | 50.1 | 5300 |
| YX2-KK500-4 | 1800 | 1490 | 96.2% | 96.3% | 95.9% | 0.909 | 0.902 | 0.865 | 198.1 | 5.5 | 43.1 | 11539 | 0.5 | 2.2 | 47.3 | 6010 |
| YX2-KK500-4 | 2000 | 1490 | 96.4% | 96.5% | 96.2% | 0.907 | 0.899 | 0.859 | 220.1 | 5.5 | 49.5 | 12820 | 0.5 | 2.2 | 50.7 | 6260 |
| YX2-KK500-4 | 2240 | 1490 | 96.6% | 96.8% | 96.5% | 0.912 | 0.907 | 0.874 | 244.6 | 5.5 | 50.5 | 14358 | 0.5 | 2.2 | 57.3 | 6640 |
| YX2-KK500-4 | 2500 | 1491 | 96.8% | 96.9% | 96.6% | 0.906 | 0.896 | 0.852 | 274.4 | 6.0 | 64.1 | 16018 | 0.5 | 2.2 | 60.7 | 6830 |
| YX2-KK500-4 | 2600 | 1492 | 97.0% | 97.0% | 96.6% | 0.887 | 0.863 | 0.794 | 290.7 | 6.5 | 88.4 | 16642 | 0.6 | 2.6 | 64.0 | 7020 |
| YX2-KK500-6 | 1400 | 991 | 96.2% | 96.5% | 96.4% | 0.886 | 0.874 | 0.822 | 158.0 | 5.5 | 40.9 | 13490 | 0.6 | 2.0 | 66.9 | 6040 |
| YX2-KK500-6 | 1600 | 992 | 96.5% | 96.7% | 96.5% | 0.872 | 0.848 | 0.778 | 182.9 | 6.0 | 57.0 | 15399 | 0.7 | 2.4 | 77.2 | 6400 |
| YX2-KK500-6 | 1800 | 992 | 96.7% | 96.9% | 96.7% | 0.875 | 0.853 | 0.785 | 204.7 | 6.0 | 62.0 | 17322 | 0.7 | 2.4 | | |

| 型号 Type | 功率 Rated Power (kW) | 转速 Speed (r/min) | 效率 Efficiency (%) | | | 功率因数 Power Factor (cosφ) | | | 额定 电流 Rated Current (A) | 启动 电流 倍数 I _a | 空载 电流 I ₀ | 额定 转矩 Rated Torque (N·m) | 启动 转矩 倍数 T _{st} * | 最大 转矩 倍数 T _m * | 转子转动 惯量 Moment of Inertia (kg·m ²) | 电机 总重 Weight (kg) |
|--------------|---------------------------|------------------------|----------------------|-------------|-------------|-----------------------------|-------------|-------------|----------------------------------|----------------------------------|----------------------------|-----------------------------------|-------------------------------------|------------------------------------|--|----------------------------|
| | | | 100% Load | 75% Load | 50% Load | 100% Load | 75% Load | 50% Load | | | | | | | | |
| YX2-KK500-10 | 800 | 593 | 95.9% | 96.3% | 96.3% | 0.846 | 0.822 | 0.748 | 94.9 | 5.0 | 31.1 | 12877 | 0.6 | 2.0 | 82.8 | 6220 |
| YX2-KK500-10 | 900 | 595 | 96.2% | 96.3% | 96.0% | 0.815 | 0.769 | 0.665 | 110.4 | 5.5 | 46.8 | 14453 | 0.8 | 2.4 | 98.1 | 6700 |
| YX2-KK500-10 | 1000 | 595 | 96.2% | 96.3% | 95.9% | 0.795 | 0.741 | 0.628 | 125.8 | 6.0 | 58.1 | 16053 | 0.8 | 2.4 | 103.2 | 6850 |
| YX2-KK500-12 | 500 | 494 | 95.2% | 95.5% | 95.3% | 0.793 | 0.749 | 0.645 | 63.7 | 5.0 | 27.4 | 9668 | 0.7 | 2.0 | 67.5 | 5760 |
| YX2-KK500-12 | 560 | 494 | 95.3% | 95.6% | 95.3% | 0.780 | 0.731 | 0.621 | 72.5 | 5.0 | 33.0 | 10824 | 0.8 | 2.0 | 72.6 | 5920 |
| YX2-KK500-12 | 630 | 494 | 95.5% | 95.8% | 95.5% | 0.788 | 0.740 | 0.633 | 80.6 | 5.0 | 35.8 | 12174 | 0.8 | 2.0 | 82.9 | 6230 |
| YX2-KK500-12 | 710 | 495 | 95.7% | 95.9% | 95.5% | 0.777 | 0.725 | 0.613 | 91.9 | 5.0 | 42.7 | 13712 | 0.8 | 2.2 | 93.1 | 6540 |
| YX2-KK500-12 | 800 | 495 | 95.6% | 95.7% | 95.2% | 0.741 | 0.676 | 0.553 | 108.6 | 5.5 | 57.7 | 15434 | 0.9 | 2.4 | 103.4 | 6840 |
| YX2-KK560-4 | 2800 | 1491 | 96.4% | 96.4% | 95.8% | 0.884 | 0.861 | 0.796 | 316.1 | 6.0 | 94.5 | 17929 | 0.5 | 2.4 | 82.9 | 9010 |
| YX2-KK560-4 | 3150 | 1492 | 96.7% | 96.6% | 96.0% | 0.877 | 0.848 | 0.772 | 357.6 | 6.5 | 116.9 | 20161 | 0.6 | 2.8 | 93.8 | 9450 |
| YX2-KK560-4 | 3550 | 1492 | 96.9% | 96.8% | 96.4% | 0.891 | 0.870 | 0.807 | 395.8 | 6.5 | 114.3 | 22724 | 0.6 | 2.6 | 104.7 | 9890 |
| YX2-KK560-4 | 4000 | 1492 | 97.0% | 97.0% | 96.6% | 0.897 | 0.879 | 0.823 | 442.4 | 6.5 | 119.8 | 25608 | 0.6 | 2.6 | 115.7 | 10330 |
| YX2-KK560-4 | 4500 | 1492 | 97.1% | 97.2% | 96.9% | 0.910 | 0.899 | 0.855 | 489.9 | 6.0 | 114.8 | 28813 | 0.6 | 2.4 | 132.0 | 10980 |
| YX2-KK560-6 | 2240 | 993 | 96.7% | 96.8% | 96.4% | 0.875 | 0.853 | 0.786 | 254.9 | 5.5 | 77.0 | 21534 | 0.5 | 2.2 | 121.0 | 9060 |
| YX2-KK560-6 | 2500 | 994 | 96.8% | 96.9% | 96.6% | 0.875 | 0.852 | 0.783 | 283.9 | 6.0 | 87.0 | 24026 | 0.6 | 2.4 | 135.9 | 9400 |
| YX2-KK560-6 | 2800 | 994 | 97.0% | 97.1% | 96.7% | 0.864 | 0.835 | 0.755 | 321.3 | 6.0 | 108.5 | 26899 | 0.6 | 2.4 | 150.8 | 9750 |
| YX2-KK560-6 | 3150 | 995 | 97.1% | 97.1% | 96.6% | 0.828 | 0.781 | 0.677 | 376.9 | 7.0 | 158.2 | 30240 | 0.7 | 2.8 | 165.8 | 10120 |
| YX2-KK560-6 | 3350 | 995 | 97.2% | 97.2% | 96.8% | 0.852 | 0.812 | 0.717 | 389.0 | 7.0 | 148.9 | 32153 | 0.7 | 2.8 | 195.7 | 10800 |
| YX2-KK560-6 | 3550 | 995 | 97.2% | 97.3% | 96.9% | 0.858 | 0.822 | 0.733 | 409.6 | 7.0 | 148.9 | 34083 | 0.7 | 2.6 | 195.7 | 11070 |
| YX2-KK560-8 | 1600 | 745 | 96.7% | 96.7% | 96.3% | 0.826 | 0.790 | 0.699 | 192.8 | 5.5 | 73.7 | 20502 | 0.6 | 2.2 | 136.4 | 8930 |
| YX2-KK560-8 | 1800 | 745 | 96.8% | 96.9% | 96.5% | 0.838 | 0.808 | 0.725 | 213.7 | 5.5 | 75.9 | 23068 | 0.5 | 2.2 | 153.3 | 9350 |
| YX2-KK560-8 | 2000 | 745 | 96.9% | 97.0% | 96.7% | 0.838 | 0.807 | 0.724 | 237.0 | 5.5 | 84.4 | 25627 | 0.5 | 2.2 | 170.1 | 9830 |
| YX2-KK560-8 | 2240 | 745 | 97.0% | 97.1% | 96.8% | 0.847 | 0.819 | 0.741 | 262.4 | 5.5 | 89.3 | 28699 | 0.5 | 2.2 | 195.4 | 10460 |
| YX2-KK560-8 | 2500 | 746 | 97.0% | 97.1% | 96.7% | 0.823 | 0.784 | 0.688 | 301.1 | 6.0 | 119.2 | 32013 | 0.6 | 2.2 | 212.2 | 10880 |
| YX2-KK560-8 | 2700 | 746 | 97.1% | 97.1% | 96.7% | 0.801 | 0.753 | 0.647 | 334.3 | 6.0 | 146.0 | 34569 | 0.6 | 2.4 | 220.7 | 11060 |
| YX2-KK560-10 | 1120 | 594 | 95.9% | 96.2% | 96.0% | 0.842 | 0.817 | 0.740 | 133.5 | 5.0 | 44.9 | 18022 | 0.6 | 2.0 | 133.9 | 8560 |
| YX2-KK560-10 | 1250 | 593 | 96.0% | 96.3% | 96.1% | 0.840 | 0.815 | 0.738 | 149.3 | 5.0 | 50.2 | 20117 | 0.6 | 2.0 | 143.4 | 8770 |
| YX2-KK560-10 | 1400 | 593 | 96.0% | 96.4% | 96.4% | 0.851 | 0.834 | 0.769 | 164.9 | 4.5 | 49.8 | 22543 | 0.5 | 1.8 | 162.2 | 9190 |
| YX2-KK560-10 | 1600 | 594 | 96.4% | 96.7% | 96.5% | 0.852 | 0.830 | 0.759 | 187.5 | 5.0 | 59.6 | 25733 | 0.6 | 2.0 | 200.0 | 10030 |
| YX2-KK560-10 | 1800 | 594 | 96.5% | 96.7% | 96.6% | 0.845 | 0.819 | 0.741 | 212.4 | 5.0 | 71.9 | 28935 | 0.6 | 2.0 | 218.9 | 10450 |
| YX2-KK560-10 | 2000 | 595 | 96.6% | 96.8% | 96.6% | 0.840 | 0.809 | 0.725 | 237.2 | 5.5 | 84.7 | 32128 | 0.7 | 2.2 | 247.2 | 11120 |
| YX2-KK560-12 | 900 | 494 | 95.7% | 95.9% | 95.6% | 0.797 | 0.752 | 0.647 | 113.6 | 5.0 | 49.0 | 17388 | 0.6 | 2.2 | 143.4 | 8740 |
| YX2-KK560-12 | 1000 | 494 | 95.8% | 96.1% | 96.0% | 0.814 | 0.776 | 0.681 | 123.5 | 4.5 | 48.8 | 19328 | 0.6 | 2.0 | 162.2 | 9140 |
| YX2-KK560-12 | 1120 | 495 | 96.1% | 96.2% | 95.8% | 0.787 | 0.734 | 0.622 | 142.5 | 5.0 | 65.9 | 21608 | 0.7 | 2.4 | 190.6 | 9740 |
| YX2-KK560-12 | 1250 | 495 | 96.0% | 96.0% | 95.5% | 0.743 | 0.675 | 0.550 | 168.7 | 5.5 | 90.7 | 24097 | 0.8 | 2.6 | 200.0 | 9940 |
| YX2-KK560-12 | 1400 | 495 | 96.2% | 96.3% | 95.9% | 0.778 | 0.722 | 0.606 | 180.1 | 5.5 | 86.1 | 26999 | 0.7 | 2.4 | 228.3 | 10540 |
| YX2-KK560-12 | 1600 | 495 | 96.2% | 96.3% | 96.0% | 0.772 | 0.715 | 0.599 | 207.4 | 5.0 | 100.2 | 30862 | 0.7 | 2.4 | 247.2 | 10900 |
| YX2-KK560-14 | 710 | 423 | 94.7% | 95.4% | 95.4% | 0.770 | 0.741 | 0.651 | 93.7 | 3.5 | 36.9 | 16049 | 0.4 | 1.6 | 152.8 | 8880 |
| YX2-KK560-14 | 800 | 423 | 95.2% | 95.7% | 95.5% | 0.763 | 0.725 | 0.626 | 105.9 | 4.0 | 45.3 | 18053 | 0.4 | 1.6 | 181.1 | 9480 |
| YX2-KK560-14 | 900 | 423 | 95.3% | 95.8% | 95.6% | 0.763 | 0.725 | 0.625 | 119.1 | 4.0 | 50.9 | 20305 | 0.4 | 1.6 | 200.0 | 9880 |
| YX2-KK560-14 | 1000 | 423 | 95.5% | 95.9% | 95.8% | 0.766 | 0.729 | 0.630 | 131.5 | 4.0 | 55.8 | 22556 | 0.4 | 1.6 | 228.3 | 10480 |
| YX2-KK560-14 | 1120 | 424 | 95.7% | 96.0% | 95.7% | 0.749 | 0.702 | 0.593 | 150.3 | 4.0 | 70.0 | 25238 | 0.4 | 1.8 | 247.2 | 10890 |

| 型号 Type | 功率 Rated Power (kW) | 转速 Speed (r/min) | 效率 Efficiency (%) | | | 功率因数 Power Factor (cosφ) | | | 额定 电流 Rated Current (A) | 启动 电流 倍数 I _a | 空载 电流 I ₀ | 额定 转矩 Rated Torque (N·m) | 启动 转矩 倍数 T _{st} * | 最大 转矩 倍数 T _m * | 转子转动 惯量 Moment of Inertia (kg·m ²) | 电机 总重 Weight (kg) |
|--------------|---------------------------|------------------------|----------------------|-------------|-------------|-----------------------------|-------------|-------------|----------------------------------|----------------------------------|----------------------------|-----------------------------------|-------------------------------------|------------------------------------|--|----------------------------|
| | | | 100% Load | 75% Load | 50% Load | 100% Load | 75% Load | 50% Load | | | | | | | | |
| YX2-KK630-4 | 5000 | 1492 | 97.1% | 97.1% | 96.6% | 0.904 | 0.889 | 0.838 | 547.9 | 6.5 | 139.5 | 31998 | 0.5 | 2.6 | 175.3 | 12890 |
| YX2-KK630-4 | 5600 | 1493 | 97.2% | 97.2% | 96.8% | 0.903 | 0.886 | 0.832 | 613.7 | 6.5 | 161.0 | 35832 | 0.6 | 2.6 | 192.7 | 13420 |
| YX2-KK630-4 | 6300 | 1493 | 97.4% | 97.4% | 97.1% | 0.916 | 0.905 | 0.863 | 679.8 | 6.5 | 154.9 | 40312 | 0.6 | 2.6 | 227.4 | 14470 |
| YX2-KK630-6 | 4000 | 994 | 97.0% | 97.2% | 96.9% | 0.886 | 0.877 | 0.833 | 447.8 | 5.5 | 108.9 | 38446 | 0.5 | 2.0 | 232.1 | 12730 |
| YX2-KK630-6 | 4500 | 995 | 97.3% | 97.3% | 96.9% | 0.876 | 0.853 | 0.786 | 508.5 | 6.5 | 154.2 | 43200 | 0.7 | 2.4 | 278.1 | 13730 |
| YX2-KK630-6 | 5000 | 995 | 97.4% | 97.4% | 97.0% | 0.869 | 0.842 | 0.767 | 568.2 | 6.5 | 185.0 | 47985 | 0.7 | 2.4 | 312.6 | 14480 |
| YX2-KK630-6 | 5600 | 995 | 97.5% | 97.5% | 97.2% | 0.870 | 0.845 | 0.772 | 635.4 | 6.5 | 201.6 | 53749 | 0.7 | 2.4 | 335.6 | 14990 |
| YX2-KK630-8 | 2800 | 746 | 97.2% | 97.2% | 96.8% | 0.834 | 0.805 | 0.722 | 332.4 | 5.5 | 118.4 | 35825 | 0.5 | 2.0 | 300.4 | 12910 |
| YX2-KK630-8 | 3150 | 746 | 97.2% | 97.3% | 97.0% | 0.845 | 0.823 | 0.752 | 369.1 | 5.5 | 118.8 | 40314 | 0.5 | 2.0 | 328.7 | 13430 |
| YX2-KK630-8 | 3550 | 746 | 97.4% | 97.5% | 97.2% | 0.858 | 0.840 | 0.776 | 408.9 | 5.5 | 122.5 | 45421 | 0.5 | 2.0 | 399.6 | 14210 |
| YX2-KK630-8 | 3700 | 747 | 97.5% | 97.5% | 97.2% | 0.851 | 0.826 | 0.752 | 429.3 | 5.5 | 140.7 | 47322 | 0.5 | 2.2 | 428.0 | 15230 |
| YX2-KK630-10 | 2240 | 595 | 96.7% | 97.0% | 96.8% | 0.853 | 0.835 | 0.770 | 261.2 | 5.0 | 79.3 | 35947 | 0.6 | 2.0 | 332.0 | 12670 |
| YX2-KK630-10 | 2500 | 595 | 96.9% | 97.1% | 96.9% | 0.855 | 0.836 | 0.768 | 290.4 | 5.0 | 89.4 | 40106 | 0.6 | 2.0 | 381.3 | 13420 |
| YX2-KK630-10 | 2800 | 596 | 97.0% | 97.1% | 96.9% | 0.844 | 0.815 | 0.735 | 329.4 | 5.5 | 113.9 | 44881 | 0.7 | 2.2 | 430.7 | 14170 |
| YX2-KK630-10 | 3150 | 596 | 97.1% | 97.2% | 96.8% | 0.820 | 0.778 | 0.678 | 380.6 | 6.0 | 155.1 | 50449 | 0.8 | 2.4 | 496.4 | 15160 |
| YX2-KK630-12 | 1800 | 495 | 96.4% | 96.7% | 96.6% | 0.827 | 0.802 | 0.723 | 217.3 | 5.0 | 75.0 | 34714 | 0.6 | 1.8 | 315.8 | 12270 |
| YX2-KK630-12 | 2000 | 496 | 96.6% | 96.9% | 96.8% | 0.838 | 0.813 | 0.737 | 237.8 | 5.0 | 79.9 | 38540 | 0.7 | 2.0 | 398.1 | 13595 |
| YX2-KK630-12 | 2240 | 496 | 96.7% | 96.9% | 96.8% | 0.832 | 0.804 | 0.722 | 268.1 | 5.0 | 94.5 | 43153 | 0.7 | 2.0 | 431.1 | 14125 |
| YX2-KK630-12 | 2500 | 496 | 96.8% | 97.0% | 96.7% | 0.813 | 0.771 | 0.672 | 305.8 | 5.5 | 125.2 | 48105 | 0.8 | 2.2 | 496.9 | 15130 |
| YX2-KK630-14 | 1250 | 425 | 95.7% | 96.2% | 96.1% | 0.776 | 0.742 | 0.649 | 162.0 | 4.0 | 65.6 | 28101 | 0.4 | 1.6 | 299.4 | 11970 |
| YX2-KK630-14 | 1400 | 426 | 96.2% | 96.4% | 96.1% | 0.756 | 0.705 | 0.594 | 185.3 | 4.5 | 87.4 | 31414 | 0.5 | 2.0 | 381.7 | 13235 |
| YX2-KK630-14 | 1600 | 426 | 96.4% | 96.6% | 96.3% | 0.774 | 0.728 | 0.622 | 206.5 | 4.5 | 92.0 | 35894 | 0.4 | 2.0 | 464.0 | 14500 |
| YX2-KK630-16 | 900 | 372 | 95.3% | 95.6% | 95.3% | 0.732 | 0.682 | 0.572 | 124.1 | 4.0 | 60.0 | 23117 | 0.4 | 1.8 | 299.4 | 11940 |
| YX2-KK630-16 | 1000 | 372 | 95.4% | 95.6% | 95.2% | 0.718 | 0.663 | 0.548 | 140.5 | 4.0 | 71.6 | 25679 | 0.4 | 1.8 | 315.8 | 12190 |
| YX2-KK630-16 | 1120 | 373 | 95.4% | 95.4% | 94.7% | 0.677 | 0.606 | 0.481 | 166.9 | 4.5 | 98.9 | 28714 | 0.5 | 2.0 | 381.7 | 13190 |
| YX2-KK630-16 | 1250 | 372 | 95.6% | 95.9% | 95.5% | 0.735 | 0.682 | 0.568 | 171.0 | 4.0 | 84.5 | 32073 | 0.5 | 1.8 | 447.5 | 14160 |

6千伏空水冷 6kV Air-water cooling

| 型号 Type | 功率 Rated Power (kW) | 转速 Speed (r/min) | 效率 Eff | | |
|------------|---------------------------|------------------------|-----------|--|--|
|------------|---------------------------|------------------------|-----------|--|--|

| 型号 Type | 功率 Rated Power (KW) | 转速 Speed (r/min) | 效率 Efficiency (%) | | | 功率因数 Power Factor (cosφ) | | | 额定 电流 Rated Current (A) | 启动 电流 倍数 I _a | 空载 电流 I ₀ | 额定 转矩 (N·m) | 启动 转矩 倍数 T _{st} * | 最大 转矩 倍数 T _m * | 转子转动 惯量 Moment of Inertia (kg·m ²) | 电机 总重 (kg) |
|--------------|---------------------------|------------------------|----------------------|-------------|-------------|-----------------------------|-------------|-------------|----------------------------------|----------------------------------|----------------------------|-------------------|-------------------------------------|------------------------------------|--|------------------|
| | | | 100% Load | 75% Load | 50% Load | 100% Load | 75% Load | 50% Load | | | | | | | | |
| YX2-KS355-4 | 560 | 1484 | 95.6% | 96.1% | 96.1% | 0.886 | 0.863 | 0.795 | 63.7 | 6.0 | 19.1 | 3605 | 0.7 | 2.4 | 8.8 | 2970 |
| YX2-KS355-4 | 630 | 1484 | 95.7% | 96.2% | 96.3% | 0.887 | 0.866 | 0.800 | 71.4 | 6.0 | 20.9 | 4055 | 0.7 | 2.4 | 9.5 | 3030 |
| YX2-KS355-6 | 280 | 989 | 94.7% | 94.9% | 94.5% | 0.847 | 0.807 | 0.712 | 33.6 | 6.0 | 13.0 | 2703 | 0.9 | 2.6 | 9.3 | 2710 |
| YX2-KS355-6 | 300 | 988 | 94.6% | 94.9% | 94.6% | 0.854 | 0.819 | 0.731 | 35.8 | 5.5 | 13.0 | 2899 | 0.8 | 2.4 | 9.3 | 2805 |
| YX2-KS355-6 | 355 | 988 | 94.7% | 95.1% | 94.9% | 0.855 | 0.821 | 0.735 | 42.2 | 5.5 | 15.1 | 3431 | 0.8 | 2.2 | 10.3 | 2900 |
| YX2-KS355-6 | 400 | 989 | 95.1% | 95.3% | 95.0% | 0.841 | 0.799 | 0.702 | 48.2 | 6.0 | 19.0 | 3862 | 0.9 | 2.4 | 11.3 | 2995 |
| YX2-KS355-6 | 450 | 990 | 95.6% | 95.8% | 95.4% | 0.838 | 0.795 | 0.697 | 54.1 | 6.0 | 21.6 | 4341 | 0.9 | 2.6 | 13.4 | 3100 |
| YX2-KS355-6 | 500 | 990 | 95.7% | 95.9% | 95.5% | 0.834 | 0.791 | 0.691 | 60.3 | 6.0 | 24.4 | 4824 | 0.9 | 2.6 | 14.4 | 3200 |
| YX2-KS355-8 | 280 | 740 | 94.1% | 94.6% | 94.4% | 0.809 | 0.768 | 0.668 | 35.4 | 5.0 | 14.6 | 3616 | 0.8 | 2.0 | 12.4 | 2980 |
| YX2-KS355-8 | 315 | 739 | 94.3% | 94.8% | 94.7% | 0.811 | 0.773 | 0.678 | 39.6 | 4.5 | 15.8 | 4070 | 0.7 | 2.0 | 13.4 | 3080 |
| YX2-KS355-8 | 355 | 739 | 94.4% | 95.0% | 94.9% | 0.810 | 0.774 | 0.679 | 44.7 | 4.5 | 17.7 | 4587 | 0.7 | 1.8 | 14.5 | 3170 |
| YX2-KS400-4 | 710 | 1483 | 95.4% | 95.8% | 95.8% | 0.888 | 0.873 | 0.817 | 80.7 | 5.0 | 21.7 | 4572 | 0.6 | 2.2 | 11.7 | 3310 |
| YX2-KS400-4 | 800 | 1483 | 95.5% | 96.0% | 96.1% | 0.892 | 0.881 | 0.832 | 90.4 | 5.0 | 22.6 | 5153 | 0.5 | 2.0 | 12.8 | 3415 |
| YX2-KS400-4 | 900 | 1483 | 95.6% | 96.1% | 96.2% | 0.894 | 0.884 | 0.837 | 101.4 | 5.0 | 24.8 | 5798 | 0.6 | 2.0 | 14.0 | 3520 |
| YX2-KS400-4 | 1000 | 1483 | 95.9% | 96.3% | 96.4% | 0.891 | 0.879 | 0.829 | 112.7 | 5.0 | 28.6 | 6439 | 0.6 | 2.0 | 15.1 | 3625 |
| YX2-KS400-4 | 1120 | 1483 | 96.0% | 96.5% | 96.6% | 0.899 | 0.892 | 0.850 | 124.8 | 5.0 | 28.7 | 7212 | 0.6 | 2.0 | 17.4 | 3730 |
| YX2-KS400-4 | 1250 | 1485 | 96.2% | 96.6% | 96.5% | 0.868 | 0.842 | 0.767 | 144.0 | 5.5 | 46.6 | 8038 | 0.7 | 2.4 | 17.4 | 3840 |
| YX2-KS400-6 | 560 | 988 | 95.4% | 95.8% | 95.6% | 0.816 | 0.779 | 0.684 | 69.2 | 5.0 | 27.3 | 5412 | 0.7 | 2.0 | 16.2 | 3345 |
| YX2-KS400-6 | 630 | 988 | 95.6% | 96.0% | 95.9% | 0.822 | 0.788 | 0.699 | 77.2 | 5.0 | 29.1 | 6090 | 0.7 | 2.0 | 17.7 | 3450 |
| YX2-KS400-6 | 710 | 988 | 95.7% | 96.1% | 96.0% | 0.821 | 0.788 | 0.699 | 87.1 | 5.0 | 32.6 | 6864 | 0.7 | 2.0 | 19.1 | 3555 |
| YX2-KS400-6 | 800 | 987 | 95.8% | 96.3% | 96.3% | 0.841 | 0.819 | 0.746 | 95.6 | 4.5 | 31.1 | 7738 | 0.6 | 1.8 | 22.0 | 3760 |
| YX2-KS400-8 | 400 | 742 | 95.1% | 95.5% | 95.3% | 0.820 | 0.774 | 0.670 | 49.4 | 5.5 | 20.7 | 5150 | 0.8 | 2.2 | 20.2 | 3310 |
| YX2-KS400-8 | 450 | 741 | 94.8% | 95.4% | 95.5% | 0.831 | 0.796 | 0.705 | 55.0 | 5.0 | 20.7 | 5804 | 0.7 | 2.0 | 20.2 | 3420 |
| YX2-KS400-8 | 500 | 741 | 95.1% | 95.6% | 95.6% | 0.826 | 0.794 | 0.706 | 61.2 | 4.5 | 22.7 | 6448 | 0.6 | 2.0 | 21.9 | 3530 |
| YX2-KS400-8 | 560 | 741 | 95.2% | 95.7% | 95.7% | 0.820 | 0.785 | 0.693 | 69.0 | 4.5 | 26.5 | 7220 | 0.6 | 2.0 | 23.6 | 3630 |
| YX2-KS400-10 | 250 | 591 | 93.7% | 94.2% | 93.8% | 0.736 | 0.685 | 0.573 | 34.9 | 4.0 | 17.0 | 4039 | 0.5 | 1.8 | 17.0 | 3200 |
| YX2-KS400-10 | 280 | 591 | 94.0% | 94.4% | 94.0% | 0.727 | 0.675 | 0.562 | 39.4 | 4.0 | 19.6 | 4522 | 0.5 | 1.8 | 18.6 | 3305 |
| YX2-KS400-10 | 315 | 592 | 94.1% | 94.4% | 93.9% | 0.714 | 0.656 | 0.539 | 45.1 | 4.0 | 23.6 | 5083 | 0.6 | 1.8 | 20.3 | 3410 |
| YX2-KS400-10 | 355 | 591 | 93.9% | 94.3% | 93.8% | 0.712 | 0.657 | 0.543 | 51.1 | 4.0 | 26.2 | 5735 | 0.5 | 1.6 | 22.0 | 3500 |
| YX2-KS400-10 | 400 | 591 | 94.0% | 94.5% | 94.2% | 0.719 | 0.671 | 0.561 | 57.0 | 3.5 | 27.7 | 6467 | 0.5 | 1.6 | 23.6 | 3600 |
| YX2-KS400-12 | 200 | 491 | 92.8% | 93.8% | 93.8% | 0.742 | 0.712 | 0.618 | 27.9 | 3.5 | 11.7 | 3894 | 0.5 | 1.4 | 20.3 | 3380 |
| YX2-KS400-12 | 224 | 491 | 93.2% | 94.1% | 94.0% | 0.735 | 0.701 | 0.604 | 31.5 | 3.5 | 13.6 | 4359 | 0.5 | 1.4 | 22.0 | 3490 |
| YX2-KS400-12 | 250 | 492 | 93.4% | 94.0% | 93.8% | 0.722 | 0.680 | 0.574 | 35.7 | 3.5 | 16.7 | 4858 | 0.5 | 1.4 | 23.7 | 3600 |
| YX2-KS450-4 | 1400 | 1487 | 96.2% | 96.4% | 96.2% | 0.856 | 0.826 | 0.746 | 163.7 | 5.5 | 55.9 | 8989 | 0.7 | 2.2 | 26.3 | 4960 |
| YX2-KS450-4 | 1600 | 1484 | 96.1% | 96.6% | 96.7% | 0.894 | 0.895 | 0.866 | 179.4 | 4.5 | 35.9 | 10298 | 0.5 | 1.8 | 30.3 | 5210 |
| YX2-KS450-4 | 1800 | 1486 | 96.3% | 96.8% | 96.8% | 0.884 | 0.875 | 0.828 | 203.3 | 5.0 | 50.4 | 11571 | 0.6 | 2.0 | 32.3 | 5340 |
| YX2-KS450-4 | 2000 | 1488 | 96.7% | 97.0% | 96.8% | 0.879 | 0.855 | 0.785 | 226.4 | 6.0 | 69.7 | 12837 | 0.6 | 2.4 | 34.2 | 5600 |
| YX2-KS450-6 | 900 | 990 | 96.0% | 96.3% | 96.3% | 0.839 | 0.812 | 0.732 | 107.6 | 5.0 | 37.1 | 8684 | 0.5 | 2.0 | 29.5 | 4600 |
| YX2-KS450-6 | 1000 | 990 | 96.1% | 96.6% | 96.6% | 0.863 | 0.848 | 0.788 | 116.0 | 5.0 | 33.3 | 9650 | 0.5 | 1.8 | 34.8 | 4860 |
| YX2-KS450-6 | 1120 | 990 | 96.2% | 96.6% | 96.6% | 0.855 | 0.835 | 0.766 | 131.0 | 5.0 | 40.7 | 10804 | 0.5 | 2.0 | 37.5 | 4990 |
| YX2-KS450-6 | 1250 | 991 | 96.4% | 96.7% | 96.6% | 0.838 | 0.808 | 0.723 | 148.9 | 5.0 | 53.1 | 12048 | 0.6 | 2.0 | 40.1 | 5120 |
| YX2-KS450-6 | 1400 | 991 | 96.6% | 96.9% | 96.7% | 0.833 | 0.798 | 0.708 | 167.5 | 5.5 | 62.8 | 13487 | 0.6 | 2.2 | 45.4 | 5390 |

| 型号 Type | 功率 Rated Power (KW) | 转速 Speed (r/min) | 效率 Efficiency (%) | | | 功率因数 Power Factor (cosφ) | | | 额定 电流 Rated Current (A) | 启动 电流 倍数 I _a | 空载 电流 I ₀ | 额定 转矩 (N·m) | 启动 转矩 倍数 T _{st} * | 最大 转矩 倍数 T _m * | 转子转动 惯量 Moment of Inertia (kg·m ²) | 电机 总重 (kg) |
|--------------|---------------------------|------------------------|----------------------|-------------|-------------|-----------------------------|-------------|-------------|----------------------------------|----------------------------------|----------------------------|-------------------|-------------------------------------|------------------------------------|--|------------------|
| | | | 100% Load | 75% Load | 50% Load | 100% Load | 75% Load | 50% Load | | | | | | | | |
| YX2-KS450-8 | 630 | 741 | 95.3% | 95.8% | 95.8% | 0.833 | 0.805 | 0.723 | 76.4 | 4.5 | 26.9 | 8125 | 0.6 | 2.0 | 34.4 | 4550 |
| YX2-KS450-8 | 710 | 741 | 95.4% | 95.9% | 95.9% | 0.831 | 0.803 | 0.721 | 86.1 | 4.5 | 30.4 | 9157 | 0.6 | 1.8 | 37.5 | 4680 |
| YX2-KS450-8 | 800 | 741 | 95.5% | 95.9% | 95.9% | 0.823 | 0.790 | 0.702 | 98.0 | 5.0 | 36.6 | 10313 | 0.7 | 2.0 | 40.6 | 4810 |
| YX2-KS450-8 | 900 | 741 | 95.7% | 96.1% | 96.1% | 0.834 | 0.805 | 0.723 | 108.6 | 5.0 | 38.3 | 11601 | 0.7 | 2.0 | 46.7 | 5070 |
| YX2-KS450-8 | 1000 | 742 | 95.9% | 96.3% | 96.2% | 0.827 | 0.793 | 0.704 | 121.3 | 5.0 | 45.4 | 12879 | 0.7 | 2.0 | 52.9 | 5330 |
| YX2-KS450-10 | 450 | 592 | 94.8% | 95.3% | 95.3% | 0.803 | 0.766 | 0.672 | 56.9 | 4.5 | 22.7 | 7262 | 0.6 | 1.8 | 37.6 | 4660 |
| YX2-KS450-10 | 500 | 592 | 95.0% | 95.4% | 95.2% | 0.794 | 0.752 | 0.652 | 63.8 | 4.5 | 26.8 | 8063 | 0.7 | 2.0 | 40.7 | 4790 |
| YX2-KS450-10 | 560 | 593 | 95.1% | 95.4% | 95.1% | 0.771 | 0.720 | 0.609 | 73.5 | 4.5 | 34.2 | 9023 | 0.7 | 2.0 | 43.8 | 4920 |
| YX2-KS450-10 | 630 | 592 | 95.0% | 95.5% | 95.5% | 0.806 | 0.773 | 0.683 | 79.2 | 4.5 | 30.5 | 10165 | 0.6 | 1.8 | 50.0 | 5050 |
| YX2-KS450-10 | 710 | 592 | 95.1% | 95.6% | 95.5% | 0.781 | 0.740 | 0.638 | 92.0 | 4.5 | 39.3 | 11454 | 0.6 | 1.8 | 50.0 | 5170 |
| YX2-KS450-12 | 315 | 492 | 94.0% | 94.5% | 94.4% | 0.779 | 0.730 | 0.621 | 41.4 | 4.5 | 18.8 | 6117 | 0.9 | 2.0 | 37.7 | 4610 |
| YX2-KS450-12 | 355 | 492 | 94.1% | 94.7% | 94.6% | 0.780 | 0.733 | 0.626 | 46.6 | 4.5 | 20.8 | 6895 | 0.9 | 1.8 | 40.8 | 4740 |
| YX2-KS450-12 | 400 | 492 | 94.2% | 94.8% | 94.7% | 0.777 | 0.730 | 0.621 | 52.6 | 4.5 | 23.7 | 7767 | 0.9 | 2.0 | 43.9 | 4870 |
| YX2-KS450-12 | 450 | 492 | 94.4% | 94.9% | 94.7% | 0.763 | 0.711 | 0.599 | 60.1 | 4.5 | 28.4 | 8733 | 0.9 | 2.0 | 47.0 | 5000 |
| YX2-KS450-12 | 500 | 493 | 94.5% | 94.8% | 94.4% | 0.735 | 0.673 | 0.551 | 69.3 | 5.0 | 36.4 | 9691 | 1.0 | 2.0 | 50.1 | 5120 |
| YX2-KS500-4 | 2240 | 1489 | 96.6% | 96.9% | 96.8% | 0.904 | 0.896 | 0.857 | 246.9 | 5.5 | 55.2 | 14364 | 0.5 | 2.2 | 50.7 | 6350 |
| YX2-KS500-4 | 2500 | 1489 | 96.8% | 97.1% | 97.1% | 0.909 | 0.905 | 0.872 | 273.4 | 5.5 | 56.0 | 16031 | 0.5 | 2.0 | 57.3 | 6710 |
| YX2-KS500-4 | 2800 | 1490 | 97.0% | 97.2% | 97.2% | 0.902 | 0.893 | 0.850 | 308.0 | 5.5 | 71.7 | 17948 | 0.5 | 2.2 | 60.7 | 6890 |
| YX2-KS500-4 | 3150 | 1490 | 97.1% | 97.3% | 97.3% | 0.894 | 0.881 | 0.831 | 349.4 | 5.5 | 88.4 | 20188 | 0.5 | 2.2 | 64.0 | 7080 |
| YX2-KS500-6 | 1600 | 991 | 96.6% | 96.9% | 96.8% | 0.865 | 0.842 | 0.771 | 184.4 | 5.5 | 57.7 | 15413 | 0.6 | 2.2 | 65.3 | 6050 |
| YX2-KS500-6 | 1800 | 991 | 96.6% | 97.0% | 97.0% | 0.875 | 0.859 | 0.799 | 204.9 | 5.5 | 57.7 | 17341 | 0.6 | 2.0 | 75.5 | 6420 |
| YX2-KS500-6 | 2000 | 991 | 96.6% | 97.0% | 97.2% | 0.886 | 0.878 | 0.833 | 225.0 | 5.0 | 54.5 | 19277 | 0.6 | 2.0 | 85.8 | 6790 |
| YX2-KS500-6 | 2240 | 992 | 96.9% | 97.2% | 97.1% | 0.858 | 0.831 | 0.754 | 259.3 | 6.0 | 86.0 | 21560 | 0.7 | 2.2 | 90.9 | 6980 |
| YX2-KS500-8 | 1120 | 743 | 96.1% | 96.5% | 96.4% | 0.832 | 0.811 | 0.739 | 134.8 | 4.5 | 44.2 | 14398 | 0.5 | 1.8 | 72.3 | 5880 |
| YX2-KS500-8 | 1250 | 744 | 96.3% | 96.6% | 96.5% | 0.829 | 0.802 | 0.721 | 150.8 | 5.0 | 52.8 | 16056 | 0.6 | 1.8 | 82.5 | 6200 |
| YX2-KS500-8 | 1400 | 744 | 96.6% | 96.8% | 96.6% | 0.827 | 0.796 | 0.710 | 168.6 | 5.0 | 61.8 | 17968 | 0.6 | 2.0 | 97.7 | 6680 |
| YX2-KS500-8 | 1600 | 744 | 96.6% | 96.8% | 96.6% | 0.807 | 0.770 | 0.674 | 197.4 | 5.0 | 79.0 | 20532 | 0.7 | 2.0 | 102.8 | 6850 |
| YX2-KS500-10 | 800 | 592 | 95.4% | 96.1% | 96.3% | 0.847 | 0.836 | 0.776 | 95.2 | 4.0 | 27.4 | 12910 | 0.5 | 1.6 | 72.6 | 5860 |
| YX2-KS500-10 | 900 | 592 | 95.7% | 96.3% | 96.5% | 0.848 | 0.835 | 0.774 | 106.6 | 4.5 | | | | | | |

| 型号 Type | 功率 Rated Power (kW) | 转速 Speed (r/min) | 效率 Efficiency (%) | | | 功率因数 Power Factor (cosφ) | | | 额定 电流 Rated Current (A) | 启动 电流 倍数 I _a | 空载 电流 I ₀ | 额定 转矩 Rated Torque (N·m) | 启动 转矩 倍数 T _{st} * | 最大 转矩 倍数 T _m * | 转子转动 惯量 Moment of Inertia (kg·m ²) | 电机 总重 Weight (kg) |
|--------------|---------------------------|------------------------|----------------------|-------------|-------------|-----------------------------|-------------|-------------|----------------------------------|----------------------------------|----------------------------|-----------------------------------|-------------------------------------|------------------------------------|--|----------------------------|
| | | | 100% Load | 75% Load | 50% Load | 100% Load | 75% Load | 50% Load | | | | | | | | |
| YX2-KS560-6 | 2500 | 993 | 96.8% | 97.1% | 97.1% | 0.878 | 0.863 | 0.808 | 283.1 | 5.0 | 77.0 | 24055 | 0.5 | 2.0 | 121.0 | 8930 |
| YX2-KS560-6 | 2800 | 993 | 97.0% | 97.2% | 97.2% | 0.879 | 0.863 | 0.806 | 316.3 | 5.5 | 87.0 | 26934 | 0.5 | 2.0 | 135.9 | 9330 |
| YX2-KS560-6 | 3150 | 993 | 97.1% | 97.4% | 97.3% | 0.871 | 0.849 | 0.782 | 358.5 | 5.5 | 108.5 | 30285 | 0.5 | 2.2 | 150.8 | 9730 |
| YX2-KS560-6 | 3350 | 994 | 97.2% | 97.4% | 97.1% | 0.835 | 0.793 | 0.694 | 396.9 | 6.5 | 158.2 | 32173 | 0.7 | 2.6 | 165.8 | 10130 |
| YX2-KS560-6 | 3550 | 995 | 97.4% | 97.5% | 97.3% | 0.858 | 0.822 | 0.732 | 409.0 | 7.0 | 148.9 | 34083 | 0.7 | 2.6 | 195.7 | 10530 |
| YX2-KS560-6 | 4000 | 994 | 97.3% | 97.5% | 97.4% | 0.866 | 0.839 | 0.763 | 456.5 | 6.0 | 148.9 | 38431 | 0.6 | 2.4 | 195.7 | 10970 |
| YX2-KS560-8 | 1800 | 745 | 96.8% | 97.0% | 96.8% | 0.833 | 0.808 | 0.729 | 214.8 | 5.0 | 73.7 | 23086 | 0.5 | 2.0 | 136.4 | 8820 |
| YX2-KS560-8 | 2000 | 745 | 96.9% | 97.1% | 97.0% | 0.842 | 0.821 | 0.750 | 235.9 | 5.0 | 75.9 | 25651 | 0.5 | 1.8 | 153.3 | 9240 |
| YX2-KS560-8 | 2240 | 745 | 97.0% | 97.2% | 97.1% | 0.843 | 0.822 | 0.751 | 263.7 | 5.0 | 84.4 | 28726 | 0.5 | 1.8 | 170.1 | 9660 |
| YX2-KS560-8 | 2500 | 745 | 97.1% | 97.3% | 97.2% | 0.851 | 0.832 | 0.766 | 291.3 | 5.0 | 89.3 | 32056 | 0.5 | 1.8 | 195.4 | 10290 |
| YX2-KS560-8 | 2800 | 745 | 97.1% | 97.3% | 97.1% | 0.832 | 0.802 | 0.719 | 333.6 | 5.5 | 119.2 | 35883 | 0.5 | 2.0 | 212.2 | 10710 |
| YX2-KS560-8 | 3150 | 745 | 97.1% | 97.3% | 97.1% | 0.816 | 0.782 | 0.691 | 382.8 | 5.0 | 146.0 | 40368 | 0.5 | 2.6 | 221.0 | 10940 |
| YX2-KS560-10 | 1400 | 592 | 95.9% | 96.4% | 96.5% | 0.842 | 0.827 | 0.764 | 166.9 | 4.5 | 50.2 | 22569 | 0.5 | 1.8 | 143.4 | 8560 |
| YX2-KS560-10 | 1600 | 594 | 96.2% | 96.5% | 96.4% | 0.822 | 0.791 | 0.705 | 194.8 | 5.0 | 71.3 | 25746 | 0.6 | 2.0 | 162.2 | 8980 |
| YX2-KS560-10 | 1800 | 593 | 96.3% | 96.7% | 96.7% | 0.843 | 0.823 | 0.753 | 213.5 | 4.5 | 67.5 | 28978 | 0.6 | 1.8 | 190.6 | 9610 |
| YX2-KS560-10 | 2000 | 593 | 96.4% | 96.8% | 96.8% | 0.849 | 0.831 | 0.765 | 235.2 | 4.5 | 71.9 | 32193 | 0.6 | 1.8 | 218.9 | 10240 |
| YX2-KS560-10 | 2240 | 594 | 96.5% | 96.9% | 96.9% | 0.845 | 0.824 | 0.752 | 264.1 | 5.0 | 84.7 | 36032 | 0.6 | 2.0 | 247.2 | 10900 |
| YX2-KS560-12 | 1000 | 494 | 95.6% | 96.0% | 95.9% | 0.807 | 0.771 | 0.678 | 124.8 | 4.5 | 49.0 | 19348 | 0.6 | 2.0 | 143.4 | 8530 |
| YX2-KS560-12 | 1120 | 493 | 95.6% | 96.2% | 96.2% | 0.821 | 0.794 | 0.712 | 137.3 | 4.5 | 48.8 | 21683 | 0.5 | 1.8 | 162.2 | 8930 |
| YX2-KS560-12 | 1250 | 494 | 96.0% | 96.3% | 96.1% | 0.800 | 0.757 | 0.655 | 156.5 | 5.0 | 65.9 | 24145 | 0.6 | 2.0 | 190.6 | 9530 |
| YX2-KS560-12 | 1400 | 495 | 96.0% | 96.1% | 95.8% | 0.762 | 0.704 | 0.587 | 184.3 | 5.0 | 90.7 | 27021 | 0.7 | 2.2 | 200.0 | 9730 |
| YX2-KS560-12 | 1600 | 494 | 96.1% | 96.4% | 96.2% | 0.795 | 0.751 | 0.647 | 201.7 | 4.5 | 86.1 | 30906 | 0.6 | 2.0 | 228.3 | 10330 |
| YX2-KS560-12 | 1800 | 494 | 96.1% | 96.4% | 96.2% | 0.787 | 0.741 | 0.635 | 229.1 | 4.5 | 100.2 | 34769 | 0.6 | 2.0 | 247.2 | 10730 |
| YX2-KS560-14 | 710 | 423 | 94.8% | 95.5% | 95.5% | 0.770 | 0.741 | 0.651 | 93.6 | 3.5 | 36.9 | 16049 | 0.4 | 1.6 | 152.8 | 8670 |
| YX2-KS560-14 | 800 | 423 | 95.3% | 95.7% | 95.6% | 0.763 | 0.725 | 0.625 | 105.9 | 4.0 | 45.3 | 18053 | 0.4 | 1.6 | 181.1 | 9200 |
| YX2-KS560-14 | 900 | 423 | 95.4% | 95.8% | 95.7% | 0.763 | 0.725 | 0.625 | 119.0 | 4.0 | 50.9 | 20305 | 0.4 | 1.6 | 200.0 | 9500 |
| YX2-KS560-14 | 1000 | 423 | 95.5% | 96.0% | 95.9% | 0.766 | 0.728 | 0.630 | 131.5 | 4.0 | 55.8 | 22556 | 0.4 | 1.6 | 228.3 | 10080 |
| YX2-KS560-14 | 1120 | 424 | 95.7% | 96.0% | 95.8% | 0.749 | 0.702 | 0.593 | 150.3 | 4.0 | 70.0 | 25238 | 0.4 | 1.8 | 247.2 | 10300 |
| YX2-KS560-14 | 1250 | 423 | 95.5% | 96.0% | 96.0% | 0.759 | 0.723 | 0.626 | 165.9 | 3.5 | 70.0 | 28214 | 0.4 | 1.6 | 247.2 | 10680 |
| YX2-KS560-16 | 630 | 370 | 93.7% | 94.3% | 94.1% | 0.690 | 0.642 | 0.531 | 93.7 | 3.0 | 47.4 | 16278 | 0.4 | 1.4 | 143.4 | 8450 |
| YX2-KS560-16 | 710 | 370 | 93.8% | 94.0% | 93.3% | 0.635 | 0.568 | 0.449 | 114.7 | 3.5 | 69.2 | 18311 | 0.4 | 1.6 | 152.8 | 8650 |
| YX2-KS560-16 | 800 | 370 | 94.7% | 95.1% | 94.9% | 0.710 | 0.662 | 0.553 | 114.6 | 3.5 | 56.1 | 20643 | 0.4 | 1.6 | 218.9 | 10050 |
| YX2-KS560-16 | 900 | 370 | 94.8% | 95.3% | 95.2% | 0.720 | 0.678 | 0.573 | 126.8 | 3.5 | 59.1 | 23230 | 0.3 | 1.6 | 249.0 | 10690 |
| YX2-KS630-4 | 5600 | 1491 | 97.3% | 97.5% | 97.3% | 0.906 | 0.897 | 0.856 | 611.2 | 5.5 | 139.5 | 35861 | 0.5 | 2.2 | 175.3 | 12390 |
| YX2-KS630-4 | 6300 | 1492 | 97.4% | 97.6% | 97.4% | 0.905 | 0.895 | 0.851 | 687.4 | 6.0 | 161.0 | 40339 | 0.5 | 2.4 | 192.7 | 12910 |
| YX2-KS630-4 | 7100 | 1492 | 97.5% | 97.7% | 97.6% | 0.916 | 0.911 | 0.878 | 764.5 | 6.0 | 154.9 | 45461 | 0.5 | 2.2 | 227.4 | 13970 |
| YX2-KS630-6 | 4500 | 994 | 97.3% | 97.5% | 97.4% | 0.885 | 0.876 | 0.829 | 502.7 | 5.5 | 124.8 | 43247 | 0.5 | 2.0 | 255.1 | 12180 |
| YX2-KS630-6 | 5000 | 994 | 97.4% | 97.5% | 97.4% | 0.879 | 0.864 | 0.807 | 562.3 | 6.0 | 154.2 | 48033 | 0.6 | 2.2 | 278.1 | 12820 |
| YX2-KS630-6 | 5600 | 995 | 97.5% | 97.7% | 97.5% | 0.875 | 0.855 | 0.791 | 631.9 | 6.0 | 185.0 | 53776 | 0.6 | 2.2 | 312.6 | 13780 |
| YX2-KS630-6 | 6300 | 994 | 97.6% | 97.7% | 97.6% | 0.875 | 0.858 | 0.797 | 710.6 | 6.0 | 201.6 | 60510 | 0.6 | 2.2 | 335.6 | 14420 |
| YX2-KS630-8 | 3550 | 746 | 97.3% | 97.5% | 97.2% | 0.836 | 0.812 | 0.736 | 420.0 | 5.5 | 141.1 | 45434 | 0.5 | 2.0 | 342.9 | 13130 |
| YX2-KS630-8 | 4000 | 746 | 97.4% | 97.6% | 97.5% | 0.858 | 0.850 | 0.799 | 460.4 | 5.0 | 122.5 | 51213 | 0.4 | 1.8 | 399.6 | 14170 |

| 型号 Type | 功率 Rated Power (kW) | 转速 Speed (r/min) | 效率 Efficiency (%) | | | 功率因数 Power Factor (cosφ) | | | 额定 电流 Rated Current (A) | 启动 电流 倍数 I _a | 空载 电流 I ₀ | 额定 转矩 Rated Torque (N·m) | 启动 转矩 倍数 T _{st} * | 最大 转矩 倍数 T _m * | 转子转动 惯量 Moment of Inertia (kg·m ²) | 电机 总重 Weight (kg) |
|--------------|---------------------------|------------------------|----------------------|-------------|-------------|-----------------------------|-------------|-------------|----------------------------------|----------------------------------|----------------------------|-----------------------------------|-------------------------------------|------------------------------------|--|----------------------------|
| | | | 100% Load | 75% Load | 50% Load | 100% Load | 75% Load | 50% Load | | | | | | | | |
| YX2-KS630-8 | 4500 | 746 | 97.5% | 97.7% | 97.6% | 0.854 | 0.845 | 0.793 | 520.3 | 5.0 | 140.7 | 57623 | 0.4 | 1.8 | 428.0 | 14680 |
| YX2-KS630-10 | 2500 | 594 | 96.7% | 97.1% | 97.1% | 0.853 | 0.845 | 0.792 | 291.6 | 4.5 | 79.3 | 40167 | 0.5 | 1.6 | 332.0 | 12000 |
| YX2-KS630-10 | 2800 | 595 | 96.8% | 97.2% | 97.2% | 0.856 | 0.846 | 0.791 | 325.0 | 4.5 | 89.4 | 44964 | 0.5 | 1.8 | 381.3 | 12750 |
| YX2-KS630-10 | 3000 | 595 | 97.0% | 97.2% | 97.1% | 0.847 | 0.824 | 0.751 | 351.5 | 5.5 | 113.9 | 48119 | 0.6 | 2.0 | 430.7 | 13500 |
| YX2-KS630-10 | 3350 | 595 | 96.9% | 97.2% | 97.2% | 0.850 | 0.831 | 0.764 | 391.4 | 5.0 | 120.4 | 53742 | 0.6 | 1.8 | 463.5 | 14000 |
| YX2-KS630-10 | 3550 | 596 | 97.1% | 97.3% | 97.1% | 0.830 | 0.798 | 0.712 | 423.7 | 5.5 | 155.1 | 56902 | 0.7 | 2.0 | 496.4 | 14490 |
| YX2-KS630-12 | 2000 | 495 | 96.2% | 96.7% | 96.8% | 0.830 | 0.814 | 0.748 | 241.1 | 4.5 | 75.0 | 38623 | 0.6 | 1.6 | 315.8 | 11710 |
| YX2-KS630-12 | 2240 | 495 | 96.5% | 96.9% | 97.0% | 0.840 | 0.826 | 0.763 | 265.9 | 4.5 | 79.9 | 43222 | 0.6 | 1.8 | 398.1 | 12960 |
| YX2-KS630-12 | 2500 | 495 | 96.5% | 97.0% | 97.0% | 0.835 | 0.817 | 0.748 | 298.3 | 4.5 | 94.5 | 48221 | 0.6 | 1.8 | 431.1 | 13460 |
| YX2-KS630-12 | 2800 | 496 | 96.7% | 97.0% | 96.9% | 0.822 | 0.790 | 0.703 | 338.9 | 5.0 | 125.2 | 53934 | 0.7 | 2.0 | 496.9 | 14460 |
| YX2-KS630-14 | 1400 | 425 | 95.9% | 96.4% | 96.3% | 0.773 | 0.739 | 0.643 | 181.6 | 4.0 | 74.5 | 31459 | 0.4 | 1.6 | 338.6 | 11870 |
| YX2-KS630-14 | 1600 | 425 | 96.1% | 96.5% | 96.3% | 0.769 | 0.732 | 0.634 | 208.4 | 4.0 | 87.4 | 35944 | 0.4 | 1.6 | 381.7 | 12650 |
| YX2-KS630-14 | 1800 | 425 | 96.1% | 96.5% | 96.3% | 0.770 | 0.730 | 0.629 | 234.0 | 4.0 | 100.7 | 40419 | 0.4 | 1.8 | 447.5 | 13690 |
| YX2-KS630-14 | 2000 | 426 | 96.3% | 96.4% | 95.9% | 0.719 | 0.657 | 0.536 | 278.0 | 4.5 | 148.1 | 44857 | 0.5 | 2.0 | 496.9 | 14430 |
| YX2-KS630-16 | 1000 | 372 | 95.4% | 95.7% | 95.3% | 0.721 | 0.668 | 0.554 | 139.8 | 4.0 | 70.3 | 25679 | 0.4 | 1.8 | 319.0 | 11560 |
| YX2-KS630-16 | 1120 | 372 | 95.6% | 95.9% | 95.6% | 0.733 | 0.684 | 0.575 | 153.8 | 4.0 | 73.8 | 28760 | 0.4 | 1.6 | 365.2 | 12310 |
| YX2-KS630-16 | 1250 | 372 | 95.7% | 96.0% | 95.7% | 0.736 | 0.688 | 0.578 | 170.6 | 4.0 | 81.3 | 32090 | 0.4 | 1.8 | 414.6 | 13060 |
| YX2-KS630-16 | 1400 | 372 | 95.8% | 95.9% | 95.5% | 0.717 | 0.656 | 0.536 | 196.1 | 4.5 | 104.1 | 35902 | 0.5 | 2.0 | 506.3 | 13600 |
| YX2-KS630-16 | 1600 | 373 | 95.7% | 95.8% | 95.2% | 0.682 | 0.614 | 0.491 | 235.8 | 4.5 | 135.7 | 41020 | 0.5 | 2.0 | 506.3 | 14330 |

10千伏空冷 10kV Air-air cooling

| 型号 Type | 功率 Rated Power (kW) | 转速 Speed (r/min) | 效率 Efficiency (%) | | | 功率因数 Power Factor (cosφ) | | | 额定 电流 Rated Current (A) | 启动 电流 倍数 I _a | 空载 电流 I ₀ | 额定 转矩 Rated Torque (N·m) | 启动 转矩 倍数 T _{st} * | 最大 转矩 倍数 T _m * | 转子转动 惯量 Moment of Inertia (kg·m ²) | 电机 总重 Weight (kg) |
|-------------|---------------------------|------------------------|----------------------|-------------|-------------|-----------------------------|-------------|-------------|----------------------------------|----------------------------------|----------------------------|-----------------------------------|-------------------------------------|------------------------------------|--|----------------------------|
| | | | 100% Load | 75% Load | 50% Load | 100% Load | 75% Load | 50% Load | | | | | | | | |
| YX2-KK400-4 | 500 | 1484 | 94.3% | 94.5% | 93.8% | 0.884 | 0.865 | 0.805 | 34.7 | 5.5 | 9.9 | 3218 | 0.6 | 2.2 | 9.7 | 3210 |
| YX2-KK400-4 | 560 | 1484 | 94.5% | 94.8% | 94.3% | 0.887 | 0.871 | 0.814 | 38.6 | 5.0 | 10.6 | 3604 | 0.6 | 2.2 | 10.6 | 3315 |
| YX2-KK400-4 | 630 | 1484 | 94.8% | 95.0% | 94.6% | 0.887 | 0.870 | 0.813 | 43.3 | 5.5 | 12.0 | 4054 | 0.6 | 2.2 | 11.6 | 3420 |
| YX2-KK400-4 | 710 | 1485 | 95.1% | 95.4% | 95.0% | 0.882 | 0.862 | 0.799 | 48.9 | 5.5 | 14.2 | 4567 | 0.6 | 2.2 | 12.5 | 3525 |
| YX2-KK400-4 | 800 | 1486 | 95.4% | 95.6% | 95.2% | 0.871 | 0.844 | 0.769 | 55.6 | 6.0 | 18.1 | 5143 | 0.7 | 2.4 | 13.5 | 3630 |
| YX2-KK400- | | | | | | | | | | | | | | | | |

| 型号 Type | 功率 Rated Power (KW) | 转速 Speed (r/min) | 效率 Efficiency (%) | | | 功率因数 Power Factor (cosφ) | | | 额定 电流 Rated Current (A) | 启动 电流 倍数 I _a | 空载 电流 I ₀ | 额定 转矩 Rated Torque (N·m) | 启动 转矩 倍数 T _{st} * | 最大 转矩 倍数 T _m * | 转子转动 惯量 Moment of Inertia (kg·m ²) | 电机 总重 (kg) |
|-------------|---------------------------|------------------------|----------------------|-------------|-------------|-----------------------------|-------------|-------------|----------------------------------|----------------------------------|----------------------------|-----------------------------------|-------------------------------------|------------------------------------|--|------------------|
| | | | 100% Load | 75% Load | 50% Load | 100% Load | 75% Load | 50% Load | | | | | | | | |
| YX2-KK450-6 | 710 | 991 | 95.5% | 95.6% | 95.0% | 0.830 | 0.788 | 0.689 | 51.7 | 6.0 | 20.9 | 6842 | 0.8 | 2.4 | 26.6 | 4580 |
| YX2-KK450-6 | 800 | 991 | 95.6% | 95.8% | 95.4% | 0.838 | 0.801 | 0.710 | 57.6 | 5.5 | 21.9 | 7713 | 0.7 | 2.4 | 28.6 | 4630 |
| YX2-KK450-6 | 900 | 991 | 95.6% | 95.8% | 95.3% | 0.815 | 0.769 | 0.666 | 66.7 | 5.5 | 28.2 | 8676 | 0.8 | 2.4 | 28.6 | 4680 |
| YX2-KK450-8 | 400 | 741 | 94.5% | 94.8% | 94.3% | 0.843 | 0.814 | 0.731 | 29.0 | 5.0 | 10.3 | 5152 | 0.7 | 2.0 | 34.4 | 4220 |
| YX2-KK450-8 | 450 | 742 | 94.7% | 95.0% | 94.6% | 0.843 | 0.813 | 0.731 | 32.5 | 5.0 | 11.5 | 5796 | 0.7 | 2.0 | 37.5 | 4350 |
| YX2-KK450-8 | 500 | 742 | 94.9% | 95.1% | 94.6% | 0.836 | 0.801 | 0.712 | 36.4 | 5.0 | 13.6 | 6436 | 0.7 | 2.2 | 40.6 | 4480 |
| YX2-KK450-8 | 560 | 742 | 95.1% | 95.3% | 94.9% | 0.845 | 0.813 | 0.728 | 40.3 | 5.0 | 14.5 | 7207 | 0.7 | 2.2 | 46.7 | 4740 |
| YX2-KK450-8 | 630 | 743 | 95.3% | 95.4% | 94.8% | 0.817 | 0.771 | 0.668 | 46.7 | 5.5 | 19.8 | 8099 | 0.8 | 2.4 | 49.8 | 4850 |
| YX2-KK500-4 | 1600 | 1490 | 95.9% | 96.0% | 95.5% | 0.905 | 0.894 | 0.849 | 106.4 | 5.5 | 25.5 | 10253 | 0.5 | 2.4 | 47.3 | 5960 |
| YX2-KK400-4 | 560 | 1484 | 94.5% | 94.8% | 94.3% | 0.887 | 0.871 | 0.814 | 38.6 | 5.0 | 10.6 | 3604 | 0.6 | 2.2 | 10.6 | 3315 |
| YX2-KK400-4 | 630 | 1484 | 94.8% | 95.0% | 94.6% | 0.887 | 0.870 | 0.813 | 43.3 | 5.5 | 12.0 | 4054 | 0.6 | 2.2 | 11.6 | 3420 |
| YX2-KK400-4 | 710 | 1485 | 95.1% | 95.4% | 95.0% | 0.882 | 0.862 | 0.799 | 48.9 | 5.5 | 14.2 | 4567 | 0.6 | 2.2 | 12.5 | 3525 |
| YX2-KK400-4 | 800 | 1486 | 95.4% | 95.6% | 95.2% | 0.871 | 0.844 | 0.769 | 55.6 | 6.0 | 18.1 | 5143 | 0.7 | 2.4 | 13.5 | 3630 |
| YX2-KK400-6 | 355 | 991 | 94.3% | 94.3% | 93.5% | 0.816 | 0.761 | 0.647 | 26.7 | 6.5 | 12.2 | 3422 | 0.9 | 2.8 | 14.8 | 3110 |
| YX2-KK400-6 | 400 | 990 | 94.5% | 94.6% | 94.0% | 0.823 | 0.772 | 0.662 | 29.7 | 6.5 | 13.1 | 3857 | 0.9 | 2.8 | 16.2 | 3210 |
| YX2-KK400-6 | 450 | 991 | 94.8% | 94.9% | 94.3% | 0.822 | 0.769 | 0.659 | 33.4 | 6.5 | 14.8 | 4338 | 0.9 | 2.8 | 17.7 | 3310 |
| YX2-KK400-6 | 500 | 991 | 95.2% | 95.3% | 94.8% | 0.841 | 0.796 | 0.696 | 36.1 | 6.5 | 14.7 | 4821 | 0.9 | 2.6 | 20.6 | 3510 |
| YX2-KK400-6 | 560 | 991 | 95.4% | 95.4% | 94.8% | 0.818 | 0.765 | 0.652 | 41.4 | 6.5 | 18.7 | 5395 | 1.0 | 2.8 | 22.0 | 3600 |
| YX2-KK450-4 | 900 | 1488 | 95.2% | 95.1% | 94.2% | 0.832 | 0.788 | 0.689 | 65.6 | 6.0 | 26.8 | 5775 | 0.6 | 2.6 | 19.8 | 4460 |
| YX2-KK450-4 | 1000 | 1488 | 95.5% | 95.4% | 94.7% | 0.844 | 0.806 | 0.715 | 71.7 | 5.5 | 27.2 | 6418 | 0.5 | 2.4 | 21.4 | 4600 |
| YX2-KK450-4 | 1120 | 1488 | 95.7% | 95.7% | 95.0% | 0.849 | 0.816 | 0.730 | 79.6 | 5.5 | 28.8 | 7190 | 0.5 | 2.4 | 23.0 | 4740 |
| YX2-KK450-4 | 1250 | 1488 | 95.8% | 95.9% | 95.3% | 0.850 | 0.817 | 0.733 | 88.6 | 5.5 | 31.6 | 8025 | 0.5 | 2.4 | 24.6 | 4880 |
| YX2-KK450-4 | 1400 | 1488 | 96.0% | 96.1% | 95.6% | 0.845 | 0.811 | 0.725 | 99.7 | 5.5 | 36.3 | 8988 | 0.5 | 2.4 | 26.3 | 5030 |
| YX2-KK450-6 | 630 | 991 | 95.3% | 95.4% | 94.9% | 0.844 | 0.805 | 0.713 | 45.2 | 6.0 | 17.3 | 6071 | 0.8 | 2.4 | 26.6 | 4530 |
| YX2-KK450-6 | 710 | 991 | 95.5% | 95.6% | 95.0% | 0.830 | 0.788 | 0.689 | 51.7 | 6.0 | 20.9 | 6842 | 0.8 | 2.4 | 26.6 | 4580 |
| YX2-KK450-6 | 800 | 991 | 95.6% | 95.8% | 95.4% | 0.838 | 0.801 | 0.710 | 57.6 | 5.5 | 21.9 | 7713 | 0.7 | 2.4 | 28.6 | 4630 |
| YX2-KK450-6 | 900 | 991 | 95.6% | 95.8% | 95.3% | 0.815 | 0.769 | 0.666 | 66.7 | 5.5 | 28.2 | 8676 | 0.8 | 2.4 | 28.6 | 4680 |
| YX2-KK450-8 | 400 | 741 | 94.5% | 94.8% | 94.3% | 0.843 | 0.814 | 0.731 | 29.0 | 5.0 | 10.3 | 5152 | 0.7 | 2.0 | 34.4 | 4220 |
| YX2-KK450-8 | 450 | 742 | 94.7% | 95.0% | 94.6% | 0.843 | 0.813 | 0.731 | 32.5 | 5.0 | 11.5 | 5796 | 0.7 | 2.0 | 37.5 | 4350 |
| YX2-KK450-8 | 500 | 742 | 94.9% | 95.1% | 94.6% | 0.836 | 0.801 | 0.712 | 36.4 | 5.0 | 13.6 | 6436 | 0.7 | 2.2 | 40.6 | 4480 |
| YX2-KK450-8 | 560 | 742 | 95.1% | 95.3% | 94.9% | 0.845 | 0.813 | 0.728 | 40.3 | 5.0 | 14.5 | 7207 | 0.7 | 2.2 | 46.7 | 4740 |
| YX2-KK450-8 | 630 | 743 | 95.3% | 95.4% | 94.8% | 0.817 | 0.771 | 0.668 | 46.7 | 5.5 | 19.8 | 8099 | 0.8 | 2.4 | 49.8 | 4850 |
| YX2-KK500-4 | 1600 | 1490 | 95.9% | 96.0% | 95.5% | 0.905 | 0.894 | 0.849 | 106.4 | 5.5 | 25.5 | 10253 | 0.5 | 2.4 | 47.3 | 5960 |
| YX2-KK500-4 | 1800 | 1490 | 96.1% | 96.3% | 95.8% | 0.912 | 0.903 | 0.863 | 118.6 | 6.0 | 26.5 | 11534 | 0.5 | 2.4 | 54.0 | 6350 |
| YX2-KK500-4 | 2000 | 1491 | 96.4% | 96.4% | 96.0% | 0.903 | 0.886 | 0.833 | 132.7 | 6.5 | 34.8 | 12808 | 0.6 | 2.6 | 57.3 | 6540 |
| YX2-KK500-6 | 1000 | 992 | 95.8% | 96.0% | 95.7% | 0.887 | 0.869 | 0.810 | 67.9 | 5.5 | 19.1 | 9623 | 0.6 | 2.2 | 61.0 | 5740 |
| YX2-KK500-6 | 1120 | 993 | 96.0% | 96.1% | 95.7% | 0.868 | 0.838 | 0.759 | 77.6 | 6.0 | 26.1 | 10771 | 0.7 | 2.4 | 61.0 | 5850 |
| YX2-KK500-6 | 1250 | 993 | 96.2% | 96.3% | 96.0% | 0.877 | 0.852 | 0.780 | 85.5 | 6.0 | 27.0 | 12021 | 0.7 | 2.4 | 69.6 | 5960 |
| YX2-KK500-6 | 1400 | 994 | 96.3% | 96.3% | 95.8% | 0.830 | 0.783 | 0.678 | 101.1 | 6.5 | 42.6 | 13453 | 0.8 | 2.8 | 69.6 | 6080 |
| YX2-KK500-8 | 710 | 745 | 95.6% | 95.8% | 95.3% | 0.844 | 0.810 | 0.722 | 50.8 | 5.5 | 18.7 | 9105 | 0.7 | 2.2 | 72.3 | 5730 |
| YX2-KK500-8 | 800 | 745 | 95.8% | 95.9% | 95.5% | 0.845 | 0.813 | 0.729 | 57.1 | 5.5 | 20.4 | 10261 | 0.7 | 2.2 | 77.4 | 5890 |
| YX2-KK500-8 | 900 | 744 | 95.8% | 96.0% | 95.6% | 0.844 | 0.812 | 0.727 | 64.3 | 5.5 | 23.1 | 11545 | 0.7 | 2.2 | 82.5 | 6050 |

| 型号 Type | 功率 Rated Power (KW) | 转速 Speed (r/min) | 效率 Efficiency (%) | | | 功率因数 Power Factor (cosφ) | | | 额定 电流 Rated Current (A) | 启动 电流 倍数 I _a | 空载 电流 I ₀ | 额定 转矩 Rated Torque (N·m) | 启动 转矩 倍数 T _{st} * | 最大 转矩 倍数 T _m * | 转子转动 惯量 Moment of Inertia (kg·m ²) | 电机 总重 (kg) |
|--------------|---------------------------|------------------------|----------------------|-------------|-------------|-----------------------------|-------------|-------------|----------------------------------|----------------------------------|----------------------------|-----------------------------------|-------------------------------------|------------------------------------|--|------------------|
| | | | 100% Load | 75% Load | 50% Load | 100% Load | 75% Load | 50% Load | | | | | | | | |
| YX2-KK500-8 | 1000 | 745 | 95.9% | 96.1% | 95.7% | 0.834 | 0.799 | 0.709 | 72.1 | 5.5 | 27.2 | 12826 | 0.7 | 2.2 | 87.6 | 6210 |
| YX2-KK500-8 | 1120 | 745 | 96.1% | 96.2% | 95.8% | 0.819 | 0.778 | 0.680 | 82.1 | 5.5 | 33.2 | 14362 | 0.7 | 2.2 | 92.7 | 6380 |
| YX2-KK500-10 | 560 | 595 | 94.9% | 94.9% | 94.2% | 0.768 | 0.701 | 0.575 | 44.4 | 6.0 | 23.4 | 8986 | 0.9 | 2.8 | 67.4 | 5630 |
| YX2-KK500-10 | 630 | 595 | 95.1% | 95.1% | 94.4% | 0.770 | 0.705 | 0.581 | 49.7 | 6.0 | 25.8 | 10111 | 0.9 | 2.6 | 72.6 | 5790 |
| YX2-KK500-10 | 710 | 595 | 95.3% | 95.5% | 95.0% | 0.803 | 0.749 | 0.635 | 53.6 | 6.0 | 24.6 | 11399 | 0.8 | 2.6 | 82.8 | 5950 |
| YX2-KK500-10 | 730 | 595 | 95.3% | 95.5% | 95.1% | 0.807 | 0.755 | 0.644 | 54.8 | 6.0 | 24.6 | 11724 | 0.8 | 2.4 | 82.8 | 6110 |
| YX2-KK500-12 | 400 | 496 | 94.6% | 94.3% | 93.2% | 0.690 | 0.612 | 0.483 | 35.4 | 5.5 | 21.7 | 7704 | 0.8 | 2.6 | 61.8 | 5800 |
| YX2-KK500-12 | 450 | 495 | 94.5% | 94.5% | 93.6% | 0.715 | 0.646 | 0.521 | 38.4 | 5.0 | 21.7 | 8677 | 0.7 | 2.2 | 61.8 | 5900 |
| YX2-KK500-12 | 500 | 495 | 94.5% | 94.6% | 93.8% | 0.722 | 0.655 | 0.531 | 42.3 | 5.0 | 23.3 | 9644 | 0.7 | 2.2 | 66.2 | 6000 |
| YX2-KK500-12 | 560 | 495 | 94.7% | 94.7% | 94.0% | 0.721 | 0.656 | 0.533 | 47.4 | 4.5 | 25.9 | 10804 | 0.7 | 2.2 | 70.5 | 6100 |
| YX2-KK560-4 | 2240 | 1489 | 95.9% | 95.8% | 95.1% | 0.891 | 0.882 | 0.839 | 151.4 | 5.0 | 36.5 | 14362 | 0.4 | 2.0 | 77.5 | 8770 |
| YX2-KK560-4 | 2500 | 1490 | 96.1% | 96.1% | 95.4% | 0.879 | 0.862 | 0.803 | 170.7 | 5.5 | 48.3 | 16020 | 0.5 | 2.2 | 82.9 | 8975 |
| YX2-KK560-4 | 2800 | 1492 | 96.4% | 96.3% | 95.5% | 0.868 | 0.837 | 0.758 | 193.3 | 6.5 | 65.5 | 17922 | 0.6 | 2.6 | 99.3 | 9590 |
| YX2-KK560-4 | 3150 | 1492 | 96.6% | 96.5% | 95.9% | 0.880 | 0.857 | 0.789 | 213.8 | 6.0 | 65.3 | 20166 | 0.6 | 2.6 | 110.2 | 10000 |
| YX2-KK560-4 | 3550 | 1492 | 96.7% | 96.7% | 96.2% | 0.886 | 0.865 | 0.802 | 239.2 | 6.0 | 69.6 | 22729 | 0.6 | 2.4 | 121.1 | 10410 |
| YX2-KK560-4 | 3700 | 1492 | 96.9% | 96.8% | 96.2% | 0.862 | 0.827 | 0.741 | 255.9 | 6.5 | 91.4 | 23674 | 0.7 | 2.8 | 126.6 | 10620 |
| YX2-KK560-6 | 1600 | 993 | 96.1% | 96.1% | 95.6% | 0.874 | 0.849 | 0.778 | 109.9 | 6.0 | 34.7 | 15382 | 0.6 | 2.4 | 106.0 | 8460 |
| YX2-KK560-6 | 1800 | 993 | 96.3% | 96.4% | 95.9% | 0.881 | 0.857 | 0.789 | 122.5 | 6.0 | 37.3 | 17302 | 0.6 | 2.4 | 121.0 | 8870 |
| YX2-KK560-6 | 2000 | 994 | 96.5% | 96.5% | 95.9% | 0.851 | 0.813 | 0.720 | 140.5 | 6.5 | 53.2 | 19211 | 0.7 | 2.8 | 128.4 | 9075 |
| YX2-KK560-6 | 2240 | 993 | 96.5% | 96.6% | 96.3% | 0.880 | 0.859 | 0.794 | 152.3 | 6.0 | 45.0 | 21538 | 0.6 | 2.4 | 135.9 | 9280 |
| YX2-KK560-6 | 2500 | 994 | 96.7% | 96.8% | 96.5% | 0.891 | 0.873 | 0.815 | 167.6 | 6.0 | 46.3 | 24030 | 0.6 | 2.4 | 165.8 | 10100 |
| YX2-KK560-6 | 2800 | 994 | 96.8% | 96.9% | 96.6% | 0.881 | 0.859 | 0.791 | 189.6 | 6.0 | 57.1 | 26910 | 0.6 | 2.4 | 173.2 | 10330 |
| YX2-KK560-8 | 1250 | 745 | 96.1% | 96.2% | 95.7% | 0.840 | 0.810 | 0.727 | 89.4 | 5.5 | 31.8 | 16028 | 0.6 | 2.2 | 119.6 | 8400 |
| YX2-KK560-8 | 1400 | 745 | 96.3% | 96.4% | 95.9% | 0.831 | 0.797 | 0.709 | 101.1 | 5.5 | 37.6 | 17949 | 0.6 | 2.2 | 128.0 | 8610 |
| YX2-KK560-8 | 1600 | 745 | 96.4% | 96.6% | 96.2% | 0.840 | 0.812 | 0.731 | 114.0 | 5.5 | 39.8 | 20515 | 0.6 | 2.0 | 144.8 | 9030 |
| YX2-KK560-8 | 1800 | 745 | 96.6% | 96.7% | 96.3% | 0.839 | 0.808 | 0.725 | 128.3 | 5.5 | 45.7 | 23074 | 0.6 | 2.2 | 161.7 | 9450 |
| YX2-KK560-8 | 2000 | 745 | 96.8% | 96.9% | 96.6% | 0.856 | 0.833 | 0.761 | 139.4 | 5.5 | 44.7 | 25635 | 0.6 | 2.2 | 195.4 | 10290 |
| YX2-KK560-8 | 2240 | 746 | 96.8% | 96.8% | 96.4% | 0.828 | 0.789 | 0.693 | 161.3 | 6.0 | 63.6 | 28688 | 0.7 | 2.4 | 212.2 | 10690 |
| YX2-KK560-10 | 800 | 595 | 95.7% | 95.8% | 95.2% | 0.83 | | | | | | | | | | |

| 型号 Type | 功率 Rated Power (KW) | 转速 Speed (r/min) | 效率 Efficiency (%) | | | 功率因数 Power Factor (cosφ) | | | 额定 电流 Rated Current (A) | 启动 电流 倍数 I _a | 空载 电流 I ₀ | 额定 转矩 Rated Torque (N·m) | 启动 转矩 倍数 T _{st} * | 最大 转矩 倍数 T _m * | 转子转 动惯量 Moment of Inertia (kg·m ²) | 电机 总重 Weight (kg) |
|--------------|---------------------------|------------------------|----------------------|-------------|-------------|-----------------------------|-------------|-------------|-------------------------------------|----------------------------------|----------------------------|--------------------------------------|-------------------------------------|------------------------------------|--|----------------------------|
| | | | 100% Load | 75% Load | 50% Load | 100% Load | 75% Load | 50% Load | | | | | | | | |
| YX2-KK630-4 | 4000 | 1492 | 96.7% | 96.6% | 96.0% | 0.898 | 0.881 | 0.825 | 266.0 | 6.0 | 71.4 | 25607 | 0.5 | 2.6 | 157.9 | 12220 |
| YX2-KK630-4 | 4500 | 1492 | 96.8% | 96.8% | 96.3% | 0.903 | 0.888 | 0.836 | 297.1 | 6.0 | 76.4 | 28807 | 0.5 | 2.6 | 175.3 | 12740 |
| YX2-KK630-4 | 5000 | 1492 | 97.0% | 97.0% | 96.5% | 0.900 | 0.883 | 0.828 | 330.4 | 6.5 | 87.9 | 32001 | 0.5 | 2.6 | 192.7 | 13260 |
| YX2-KK630-4 | 5600 | 1492 | 97.2% | 97.2% | 96.7% | 0.904 | 0.888 | 0.834 | 367.9 | 6.5 | 96.1 | 35835 | 0.5 | 2.6 | 218.7 | 14040 |
| YX2-KK630-6 | 3150 | 993 | 96.6% | 96.7% | 96.3% | 0.884 | 0.870 | 0.816 | 212.9 | 5.5 | 56.9 | 30293 | 0.6 | 2.2 | 220.6 | 12260 |
| YX2-KK630-6 | 3550 | 993 | 96.8% | 96.9% | 96.5% | 0.888 | 0.877 | 0.828 | 238.7 | 5.5 | 60.2 | 34145 | 0.5 | 2.0 | 243.6 | 12760 |
| YX2-KK630-6 | 4000 | 994 | 97.0% | 97.1% | 96.7% | 0.881 | 0.860 | 0.797 | 270.1 | 6.0 | 79.2 | 38431 | 0.6 | 2.4 | 289.6 | 13260 |
| YX2-KK630-6 | 4500 | 994 | 97.1% | 97.2% | 96.7% | 0.870 | 0.842 | 0.766 | 307.6 | 6.5 | 100.4 | 43220 | 0.7 | 2.6 | 312.6 | 13760 |
| YX2-KK630-6 | 4700 | 994 | 97.1% | 97.2% | 96.8% | 0.872 | 0.847 | 0.776 | 320.4 | 6.0 | 100.4 | 45154 | 0.7 | 2.4 | 312.6 | 14250 |
| YX2-KK630-8 | 2500 | 746 | 97.0% | 97.1% | 96.7% | 0.854 | 0.836 | 0.771 | 174.4 | 5.0 | 53.0 | 31996 | 0.4 | 2.0 | 286.2 | 12590 |
| YX2-KK630-8 | 2800 | 747 | 97.1% | 97.1% | 96.5% | 0.823 | 0.782 | 0.685 | 202.3 | 6.0 | 81.3 | 35795 | 0.6 | 2.4 | 342.9 | 13590 |
| YX2-KK630-8 | 3150 | 747 | 97.2% | 97.2% | 96.8% | 0.836 | 0.801 | 0.712 | 223.7 | 6.0 | 83.4 | 40272 | 0.6 | 2.2 | 385.4 | 14340 |
| YX2-KK630-8 | 3550 | 747 | 97.3% | 97.3% | 96.8% | 0.821 | 0.780 | 0.682 | 256.8 | 6.0 | 103.5 | 45380 | 0.6 | 2.4 | 413.8 | 14800 |
| YX2-KK630-10 | 1800 | 596 | 96.4% | 96.6% | 96.3% | 0.843 | 0.812 | 0.729 | 127.9 | 5.5 | 45.2 | 28847 | 0.6 | 2.2 | 315.5 | 12130 |
| YX2-KK630-10 | 2000 | 596 | 96.5% | 96.7% | 96.4% | 0.852 | 0.823 | 0.743 | 140.5 | 5.5 | 48.2 | 32039 | 0.6 | 2.2 | 381.3 | 13130 |
| YX2-KK630-10 | 2240 | 597 | 96.7% | 96.7% | 96.3% | 0.823 | 0.777 | 0.674 | 162.5 | 6.5 | 68.0 | 35849 | 0.7 | 2.6 | 430.7 | 13880 |
| YX2-KK630-10 | 2500 | 597 | 96.7% | 96.7% | 96.2% | 0.806 | 0.754 | 0.643 | 185.2 | 6.5 | 83.4 | 40002 | 0.8 | 2.6 | 463.5 | 14400 |
| YX2-KK630-12 | 1400 | 495 | 95.9% | 96.1% | 95.8% | 0.811 | 0.762 | 0.654 | 104.0 | 5.5 | 45.3 | 27013 | 0.8 | 2.4 | 299.4 | 11800 |
| YX2-KK630-12 | 1600 | 495 | 96.1% | 96.2% | 95.9% | 0.807 | 0.756 | 0.646 | 119.1 | 6.0 | 53.1 | 30853 | 0.8 | 2.6 | 348.8 | 12550 |
| YX2-KK630-12 | 1800 | 496 | 96.1% | 96.2% | 95.8% | 0.795 | 0.736 | 0.617 | 136.1 | 6.5 | 65.4 | 34672 | 0.9 | 2.8 | 414.6 | 13550 |
| YX2-KK630-12 | 2000 | 496 | 96.3% | 96.4% | 95.9% | 0.798 | 0.740 | 0.623 | 150.3 | 6.5 | 71.1 | 38520 | 0.8 | 2.8 | 464.0 | 14340 |

10千伏空水冷
10kV Air-water cooling

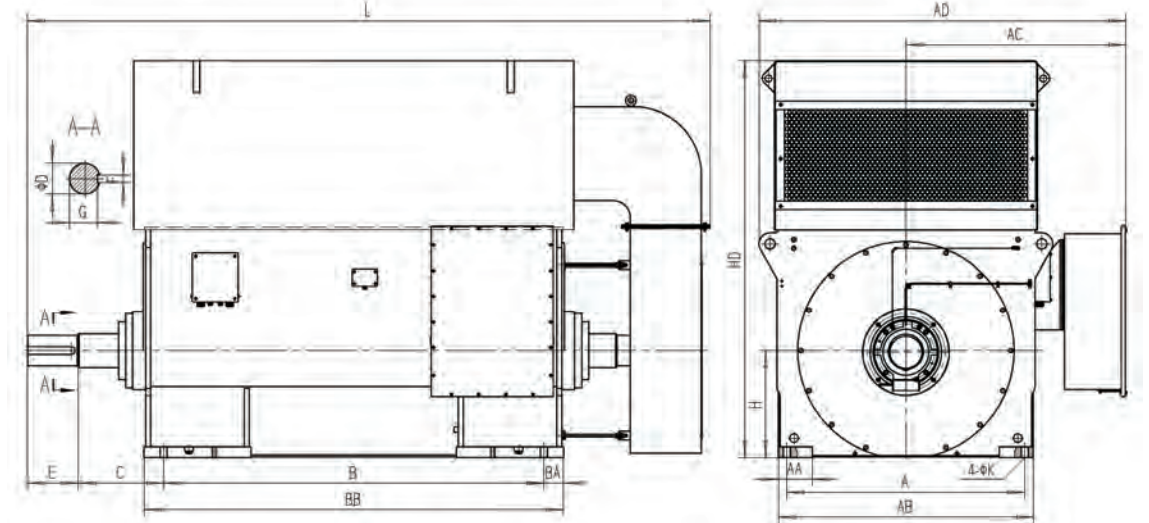
| 型号 Type | 功率 Rated Power (KW) | 转速 Speed (r/min) | 效率 Efficiency (%) | | | 功率因数 Power Factor (cosφ) | | | 额定 电流 Rated Current (A) | 启动 电流 倍数 I _a | 空载 电流 I ₀ | 额定 转矩 Rated Torque (N·m) | 启动 转矩 倍数 T _{st} * | 最大 转矩 倍数 T _m * | 转子转 动惯量 Moment of Inertia (kg·m ²) | 电机 总重 Weight (kg) |
|-------------|---------------------------|------------------------|----------------------|-------------|-------------|-----------------------------|-------------|-------------|-------------------------------------|----------------------------------|----------------------------|--------------------------------------|-------------------------------------|------------------------------------|--|----------------------------|
| | | | 100% Load | 75% Load | 50% Load | 100% Load | 75% Load | 50% Load | | | | | | | | |
| YX2-KS400-4 | 500 | 1481 | 94.3% | 94.9% | 94.9% | 0.895 | 0.889 | 0.851 | 34.2 | 4.5 | 7.7 | 3225 | 0.5 | 1.8 | 9.7 | 3260 |
| YX2-KS400-4 | 560 | 1482 | 94.6% | 95.2% | 95.1% | 0.886 | 0.875 | 0.824 | 38.6 | 5.0 | 9.9 | 3609 | 0.5 | 2.0 | 9.7 | 3330 |
| YX2-KS400-4 | 630 | 1481 | 94.8% | 95.4% | 95.4% | 0.888 | 0.879 | 0.833 | 43.2 | 4.5 | 10.6 | 4061 | 0.5 | 2.0 | 10.6 | 3400 |
| YX2-KS400-4 | 710 | 1482 | 95.0% | 95.6% | 95.7% | 0.888 | 0.879 | 0.832 | 48.6 | 5.0 | 12.0 | 4576 | 0.5 | 2.0 | 11.6 | 3470 |
| YX2-KS400-4 | 800 | 1482 | 95.3% | 95.8% | 95.9% | 0.885 | 0.872 | 0.821 | 54.8 | 5.0 | 14.2 | 5154 | 0.5 | 2.0 | 12.5 | 3540 |
| YX2-KS400-4 | 900 | 1484 | 95.6% | 96.0% | 96.0% | 0.876 | 0.857 | 0.794 | 62.1 | 5.0 | 18.1 | 5793 | 0.6 | 2.2 | 13.5 | 3590 |
| YX2-KS400-4 | 1000 | 1486 | 95.8% | 96.0% | 95.7% | 0.814 | 0.766 | 0.658 | 74.0 | 5.5 | 32.1 | 6427 | 0.7 | 2.4 | 13.5 | 3640 |
| YX2-KS400-6 | 400 | 989 | 94.5% | 94.9% | 94.6% | 0.831 | 0.785 | 0.682 | 29.4 | 6.0 | 12.2 | 3861 | 0.8 | 2.4 | 14.8 | 3170 |
| YX2-KS400-6 | 450 | 989 | 94.7% | 95.1% | 94.9% | 0.837 | 0.795 | 0.695 | 32.8 | 6.0 | 13.1 | 4344 | 0.8 | 2.4 | 16.2 | 3270 |
| YX2-KS400-6 | 500 | 989 | 95.0% | 95.3% | 95.1% | 0.834 | 0.790 | 0.689 | 36.4 | 6.0 | 14.8 | 4826 | 0.8 | 2.4 | 17.7 | 3370 |
| YX2-KS400-6 | 560 | 989 | 95.3% | 95.7% | 95.5% | 0.851 | 0.816 | 0.726 | 39.9 | 6.0 | 14.7 | 5406 | 0.8 | 2.4 | 20.6 | 3570 |
| YX2-KS400-6 | 630 | 990 | 95.5% | 95.8% | 95.5% | 0.833 | 0.789 | 0.687 | 45.7 | 6.0 | 18.7 | 6077 | 0.9 | 2.6 | 22.0 | 3660 |
| YX2-KS450-4 | 1120 | 1486 | 95.8% | 96.0% | 95.7% | 0.852 | 0.823 | 0.743 | 79.3 | 5.0 | 27.2 | 7196 | 0.5 | 2.2 | 21.4 | 4870 |
| YX2-KS450-4 | 1250 | 1486 | 95.9% | 96.2% | 95.9% | 0.856 | 0.831 | 0.756 | 87.9 | 5.0 | 28.8 | 8033 | 0.4 | 2.2 | 23.0 | 5010 |

| 型号 Type | 功率 Rated Power (KW) | 转速 Speed (r/min) | 效率 Efficiency (%) | | | 功率因数 Power Factor (cosφ) | | | 额定 电流 Rated Current (A) | 启动 电流 倍数 I _a | 空载 电流 I ₀ | 额定 转矩 Rated Torque (N·m) | 启动 转矩 倍数 T _{st} * | 最大 转矩 倍数 T _m * | 转子转 动惯量 Moment of Inertia (kg·m ²) | 电机 总重 Weight (kg) |
|--------------|---------------------------|------------------------|----------------------|-------------|-------------|-----------------------------|-------------|-------------|-------------------------------------|----------------------------------|----------------------------|--------------------------------------|-------------------------------------|------------------------------------|--|----------------------------|
| | | | 100% Load | 75% Load | 50% Load | 100% Load | 75% Load | 50% Load | | | | | | | | |
| YX2-KS450-4 | 1400 | 1486 | 96.0% | 96.3% | 96.1% | 0.856 | 0.832 | 0.760 | 98.4 | 5.0 | 31.6 | 8998 | 0.4 | 2.0 | 24.6 | 5150 |
| YX2-KS450-4 | 1600 | 1486 | 96.1% | 96.5% | 96.3% | 0.852 | 0.829 | 0.757 | 112.8 | 5.0 | 36.3 | 10286 | 0.4 | 2.0 | 26.3 | 5300 |
| YX2-KS450-6 | 710 | 990 | 95.5% | 95.7% | 95.4% | 0.830 | 0.789 | 0.691 | 51.8 | 5.5 | 20.7 | 6846 | 0.8 | 2.4 | 24.6 | 4680 |
| YX2-KS450-6 | 800 | 990 | 95.6% | 95.9% | 95.8% | 0.841 | 0.808 | 0.721 | 57.5 | 5.5 | 20.9 | 7719 | 0.7 | 2.2 | 26.6 | 4770 |
| YX2-KS450-6 | 900 | 989 | 95.7% | 96.1% | 96.0% | 0.846 | 0.819 | 0.740 | 64.2 | 5.0 | 21.9 | 8688 | 0.7 | 2.0 | 28.6 | 4860 |
| YX2-KS450-6 | 1000 | 990 | 95.7% | 96.1% | 95.9% | 0.825 | 0.788 | 0.695 | 73.2 | 5.0 | 28.2 | 9651 | 0.7 | 2.0 | 28.6 | 4950 |
| YX2-KS450-8 | 450 | 740 | 94.5% | 95.1% | 95.0% | 0.848 | 0.828 | 0.759 | 32.4 | 4.5 | 10.3 | 5806 | 0.6 | 1.8 | 34.4 | 4490 |
| YX2-KS450-8 | 500 | 740 | 94.7% | 95.2% | 95.2% | 0.848 | 0.827 | 0.756 | 35.9 | 4.5 | 11.5 | 6449 | 0.6 | 1.8 | 37.5 | 4615 |
| YX2-KS450-8 | 560 | 741 | 94.8% | 95.3% | 95.2% | 0.843 | 0.818 | 0.741 | 40.4 | 4.5 | 13.6 | 7219 | 0.6 | 2.0 | 40.6 | 4740 |
| YX2-KS450-8 | 630 | 741 | 95.0% | 95.5% | 95.4% | 0.851 | 0.828 | 0.756 | 45.0 | 4.5 | 14.5 | 8121 | 0.6 | 2.0 | 46.7 | 4990 |
| YX2-KS450-8 | 710 | 742 | 95.3% | 95.6% | 95.3% | 0.828 | 0.793 | 0.702 | 51.9 | 5.0 | 19.8 | 9141 | 0.7 | 2.0 | 49.8 | 5120 |
| YX2-KS500-4 | 1800 | 1489 | 96.2% | 96.5% | 96.4% | 0.905 | 0.900 | 0.865 | 119.3 | 5.0 | 25.5 | 11545 | 0.5 | 2.0 | 47.3 | 6020 |
| YX2-KS500-4 | 2000 | 1489 | 96.4% | 96.7% | 96.6% | 0.911 | 0.908 | 0.876 | 131.5 | 5.5 | 26.5 | 12826 | 0.5 | 2.0 | 54.0 | 6410 |
| YX2-KS500-4 | 2240 | 1490 | 96.6% | 96.8% | 96.7% | 0.905 | 0.895 | 0.851 | 148.0 | 5.5 | 34.8 | 14356 | 0.5 | 2.2 | 57.3 | 6600 |
| YX2-KS500-6 | 1120 | 991 | 96.0% | 96.4% | 96.5% | 0.889 | 0.878 | 0.829 | 75.8 | 5.0 | 19.1 | 10789 | 0.5 | 2.0 | 61.0 | 5800 |
| YX2-KS500-6 | 1250 | 992 | 96.1% | 96.5% | 96.4% | 0.873 | 0.852 | 0.784 | 86.0 | 5.5 | 26.1 | 12032 | 0.6 | 2.2 | 61.0 | 5910 |
| YX2-KS500-6 | 1400 | 992 | 96.3% | 96.7% | 96.7% | 0.882 | 0.864 | 0.803 | 95.2 | 5.5 | 27.0 | 13476 | 0.6 | 2.2 | 69.6 | 6020 |
| YX2-KS500-6 | 1600 | 993 | 96.4% | 96.7% | 96.5% | 0.844 | 0.807 | 0.715 | 113.5 | 6.0 | 42.6 | 15389 | 0.7 | 2.4 | 69.6 | 6140 |
| YX2-KS500-8 | 800 | 744 | 95.7% | 96.0% | 95.9% | 0.851 | 0.826 | 0.751 | 56.7 | 5.0 | 18.7 | 10270 | 0.6 | 2.0 | 72.3 | 5790 |
| YX2-KS500-8 | 900 | 744 | 95.8% | 96.2% | 96.0% | 0.851 | 0.829 | 0.757 | 63.7 | 5.0 | 20.4 | 11556 | 0.6 | 2.0 | 77.4 | 5950 |
| YX2-KS500-8 | 1000 | 744 | 95.9% | 96.2% | 96.1% | 0.849 | 0.826 | 0.753 | 70.9 | 5.0 | 23.1 | 12840 | 0.6 | 2.0 | 82.5 | 6110 |
| YX2-KS500-8 | 1120 | 744 | 95.9% | 96.3% | 96.2% | 0.841 | 0.815 | 0.738 | 80.1 | 5.0 | 27.2 | 14379 | 0.6 | 2.0 | 87.6 | 6270 |
| YX2-KS500-8 | 1250 | 744 | 96.1% | 96.4% | 96.2% | 0.828 | 0.797 | 0.710 | 90.7 | 5.0 | 33.2 | 16044 | 0.6 | 2.0 | 92.7 | 6440 |
| YX2-KS500-10 | 630 | 594 | 94.8% | 95.1% | 94.6% | 0.788 | 0.731 | 0.613 | 48.7 | 5.5 | 23.4 | 10121 | 0.8 | 2.4 | 67.4 | 5590 |
| YX2-KS500-10 | 710 | 594 | 95.0% | 95.3% | 94.9% | 0.790 | 0.735 | 0.620 | 54.6 | 5.5 | 25.8 | 11408 | 0.8 | 2.4 | 72.6 | 5750 |
| YX2-KS500-10 | 800 | 594 | 95.2% | 95.6% | 95.4% | 0.818 | 0.774 | 0.672 | 59.3 | 5.5 | 24.6 | 12861 | 0.7 | 2.2 | 82.8 | 5910 |
| YX2-KS500-10 | 820 | 594 | 95.2% | 95.6% | 95.4% | 0.820 | 0.779 | 0.679 | 60.7 | 5.0 | 24.6 | 13186 | 0.7 | 2.2 | 82.8 | 6070 |
| YX2-KS500-12 | 450 | 495 | 94.6% | 94.6% | 93.8% | 0.715 | 0.646 | 0.520 | 38.4 | 5.0 | 21.7 | 8677 | 0.7 | 2.2 | 61.8 | 5760 |
| YX2-KS500-12 | 500 | 495 | 94.5% | 94.7% | 94.2% | 0.734 | 0.674 | 0.554 | 41.6 | 4.5 | 21.7 | 9653 | 0.6 | 2.0 | 61.8 | 5860 |
| YX2-KS500-12 | 560 | 494 | 94.5% | 94.8% | 94.3% | 0.741 | 0.684 | 0.567 | 46.2 | 4.5 | 23.3 | 10816 | 0.6 | 2.0 | 66.2 | 5960 |
| YX2-KS500-12 | 630 | 494 | 94.6% | 94.9% | 94.5% | 0.740 | 0.685 | 0.570 | 52.0 | 4.5 | 25.9 | 12173 | 0.6 | 1.8 | 70.5 | 6060 |
| YX2-KS560-4 | 2500 | 1488 | 96.3% | 96.6% | 96.3% | 0.889 | 0.887 | 0.853 | 168.5 | 4.5 | 36.5 | 16044 | 0.4 | 1.8 | 77.5 | 8660 |
| YX | | | | | | | | | | | | | | | | |

十、电动机外形图及安装尺寸表

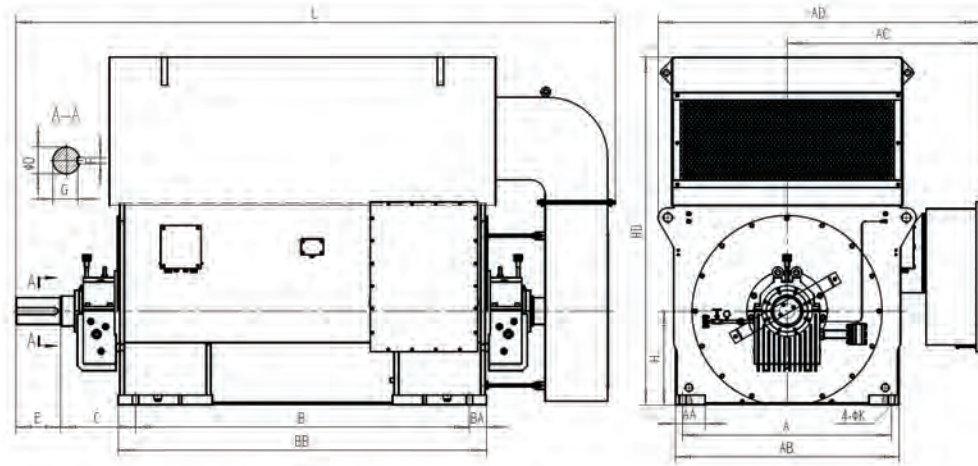
LAYOUT DRAWINGS AND DIMENSIONS

| 型号 Type | 功率 Rated Power (KW) | 转速 Speed (r/min) | 效率 Efficiency (%) | | | 功率因数 Power Factor (cosφ) | | | 额定 电流 Rated Current (A) | 启动 电流 倍数 I_{st} | 空载 电流 I_0 | 额定 转矩 Rated Torque (N·m) | 启动 转矩 倍数 T_{st} | 最大 转矩 倍数 T_m | 转子转动 惯量 Moment of Inertia (kg·m ²) | 电机 总重 Weight (kg) |
|--------------|---------------------------|------------------------|----------------------|-------------|-------------|-----------------------------|-------------|-------------|----------------------------------|----------------------------|-------------------|-----------------------------------|----------------------------|-------------------------|---|----------------------------|
| | | | 100% Load | 75% Load | 50% Load | 100% Load | 75% Load | 50% Load | | | | | | | | |
| YX2-KS560-6 | 3000 | 993 | 96.9% | 97.2% | 97.1% | 0.884 | 0.866 | 0.805 | 202.2 | 6.0 | 57.1 | 28846 | 0.6 | 2.2 | 173.2 | 10200 |
| YX2-KS560-8 | 1400 | 744 | 96.2% | 96.5% | 96.4% | 0.845 | 0.824 | 0.754 | 99.4 | 5.0 | 31.8 | 17969 | 0.5 | 1.8 | 119.6 | 8290 |
| YX2-KS560-8 | 1600 | 744 | 96.4% | 96.7% | 96.5% | 0.838 | 0.816 | 0.742 | 114.5 | 5.0 | 37.6 | 20536 | 0.5 | 1.8 | 128.0 | 8500 |
| YX2-KS560-8 | 1800 | 744 | 96.5% | 96.8% | 96.7% | 0.845 | 0.826 | 0.758 | 127.6 | 4.5 | 39.8 | 23103 | 0.5 | 1.8 | 144.8 | 8920 |
| YX2-KS560-8 | 2000 | 744 | 96.6% | 96.9% | 96.8% | 0.844 | 0.822 | 0.750 | 141.7 | 5.0 | 45.7 | 25660 | 0.5 | 1.8 | 161.7 | 9340 |
| YX2-KS560-8 | 2240 | 744 | 96.8% | 97.1% | 97.0% | 0.859 | 0.845 | 0.785 | 155.5 | 5.0 | 44.7 | 28738 | 0.5 | 1.8 | 195.4 | 10180 |
| YX2-KS560-8 | 2500 | 745 | 96.8% | 97.0% | 96.8% | 0.837 | 0.806 | 0.722 | 178.1 | 5.5 | 63.6 | 32042 | 0.6 | 2.0 | 212.2 | 10570 |
| YX2-KS560-10 | 900 | 594 | 95.7% | 96.0% | 95.7% | 0.846 | 0.812 | 0.725 | 64.2 | 5.5 | 23.3 | 14467 | 0.7 | 2.2 | 133.9 | 8250 |
| YX2-KS560-10 | 1000 | 593 | 95.5% | 95.9% | 95.9% | 0.852 | 0.827 | 0.752 | 71.0 | 5.0 | 23.3 | 16095 | 0.7 | 2.0 | 133.9 | 8450 |
| YX2-KS560-10 | 1120 | 594 | 95.6% | 96.0% | 95.9% | 0.846 | 0.818 | 0.739 | 79.9 | 5.0 | 27.4 | 18022 | 0.7 | 2.0 | 143.4 | 8650 |
| YX2-KS560-10 | 1250 | 594 | 95.7% | 96.1% | 95.9% | 0.834 | 0.799 | 0.709 | 90.4 | 5.5 | 33.8 | 20103 | 0.7 | 2.2 | 152.8 | 8850 |
| YX2-KS560-10 | 1400 | 594 | 96.0% | 96.3% | 96.1% | 0.833 | 0.797 | 0.706 | 101.1 | 5.5 | 38.2 | 22508 | 0.7 | 2.2 | 171.7 | 9200 |
| YX2-KS560-10 | 1600 | 594 | 96.1% | 96.4% | 96.3% | 0.841 | 0.808 | 0.721 | 114.3 | 5.5 | 41.5 | 25721 | 0.7 | 2.2 | 200.0 | 9750 |
| YX2-KS560-10 | 1800 | 595 | 96.2% | 96.4% | 96.1% | 0.809 | 0.760 | 0.653 | 133.6 | 6.0 | 58.2 | 28904 | 0.9 | 2.4 | 218.9 | 10020 |
| YX2-KS560-12 | 710 | 493 | 94.4% | 95.2% | 95.4% | 0.840 | 0.824 | 0.757 | 51.7 | 4.0 | 16.0 | 13765 | 0.5 | 1.6 | 133.9 | 8220 |
| YX2-KS560-12 | 800 | 493 | 94.5% | 95.2% | 95.3% | 0.831 | 0.808 | 0.731 | 58.8 | 4.0 | 19.9 | 15500 | 0.5 | 1.8 | 133.9 | 8420 |
| YX2-KS560-12 | 900 | 493 | 94.6% | 95.3% | 95.5% | 0.828 | 0.804 | 0.726 | 66.4 | 4.0 | 22.7 | 17437 | 0.5 | 1.8 | 143.4 | 8620 |
| YX2-KS560-12 | 1000 | 493 | 94.9% | 95.6% | 95.8% | 0.833 | 0.815 | 0.745 | 73.0 | 4.0 | 23.4 | 19380 | 0.5 | 1.6 | 162.2 | 9000 |
| YX2-KS560-12 | 1120 | 493 | 95.0% | 95.7% | 95.9% | 0.836 | 0.818 | 0.749 | 81.5 | 4.0 | 25.7 | 21703 | 0.5 | 1.6 | 181.1 | 9380 |
| YX2-KS560-12 | 1250 | 493 | 95.2% | 95.8% | 96.0% | 0.833 | 0.811 | 0.737 | 91.0 | 4.0 | 30.1 | 24205 | 0.5 | 1.8 | 200.0 | 9760 |
| YX2-KS560-12 | 1400 | 494 | 95.5% | 96.0% | 96.0% | 0.820 | 0.789 | 0.702 | 103.3 | 4.5 | 38.2 | 27079 | 0.5 | 1.8 | 218.9 | 9990 |
| YX2-KS630-4 | 4500 | 1491 | 97.0% | 97.1% | 96.8% | 0.900 | 0.889 | 0.844 | 297.6 | 5.5 | 71.4 | 28829 | 0.4 | 2.2 | 157.9 | 11720 |
| YX2-KS630-4 | 5000 | 1491 | 97.1% | 97.2% | 97.0% | 0.905 | 0.895 | 0.852 | 328.7 | 5.5 | 76.4 | 32029 | 0.4 | 2.2 | 175.3 | 12240 |
| YX2-KS630-4 | 5600 | 1491 | 97.3% | 97.4% | 97.2% | 0.903 | 0.892 | 0.847 | 368.2 | 5.5 | 87.9 | 35866 | 0.4 | 2.4 | 192.7 | 12760 |
| YX2-KS630-4 | 6300 | 1491 | 97.4% | 97.5% | 97.3% | 0.907 | 0.896 | 0.853 | 412.0 | 6.0 | 96.1 | 40343 | 0.5 | 2.4 | 218.7 | 13540 |
| YX2-KS630-6 | 3550 | 992 | 96.8% | 97.0% | 96.9% | 0.884 | 0.878 | 0.836 | 239.5 | 5.0 | 56.9 | 34175 | 0.5 | 1.8 | 220.6 | 11690 |
| YX2-KS630-6 | 4000 | 992 | 96.9% | 97.2% | 97.1% | 0.886 | 0.883 | 0.846 | 269.0 | 5.0 | 60.2 | 38514 | 0.5 | 1.8 | 243.6 | 12190 |
| YX2-KS630-6 | 4500 | 993 | 97.2% | 97.4% | 97.2% | 0.884 | 0.871 | 0.819 | 302.4 | 5.5 | 79.2 | 43272 | 0.6 | 2.2 | 289.6 | 12690 |
| YX2-KS630-6 | 5000 | 994 | 97.3% | 97.4% | 97.2% | 0.874 | 0.854 | 0.789 | 339.4 | 6.0 | 100.4 | 48056 | 0.6 | 2.2 | 312.6 | 13190 |
| YX2-KS630-6 | 5600 | 993 | 97.2% | 97.4% | 97.4% | 0.877 | 0.865 | 0.812 | 379.4 | 5.5 | 100.4 | 53871 | 0.6 | 2.0 | 312.6 | 13680 |
| YX2-KS630-8 | 2800 | 746 | 97.0% | 97.2% | 97.1% | 0.854 | 0.845 | 0.793 | 195.1 | 4.5 | 53.0 | 35862 | 0.4 | 1.8 | 286.2 | 12020 |
| YX2-KS630-8 | 3150 | 747 | 97.2% | 97.3% | 97.0% | 0.833 | 0.802 | 0.717 | 224.8 | 5.5 | 81.3 | 40292 | 0.5 | 2.0 | 342.9 | 13020 |
| YX2-KS630-8 | 3550 | 747 | 97.3% | 97.4% | 97.1% | 0.844 | 0.819 | 0.743 | 249.8 | 5.5 | 83.4 | 45413 | 0.5 | 2.0 | 385.4 | 13770 |
| YX2-KS630-8 | 4000 | 747 | 97.3% | 97.4% | 97.2% | 0.830 | 0.799 | 0.714 | 285.8 | 5.5 | 103.5 | 51162 | 0.5 | 2.0 | 413.8 | 14230 |
| YX2-KS630-10 | 1800 | 596 | 96.5% | 96.7% | 96.5% | 0.843 | 0.812 | 0.729 | 127.8 | 5.5 | 45.2 | 28847 | 0.6 | 2.2 | 315.5 | 11460 |
| YX2-KS630-10 | 2240 | 596 | 96.5% | 96.8% | 96.7% | 0.856 | 0.837 | 0.769 | 156.5 | 5.0 | 48.2 | 35916 | 0.5 | 2.0 | 381.3 | 12460 |
| YX2-KS630-10 | 2500 | 596 | 96.8% | 96.9% | 96.6% | 0.834 | 0.797 | 0.706 | 179.0 | 6.0 | 68.0 | 40039 | 0.6 | 2.2 | 430.7 | 13210 |
| YX2-KS630-10 | 2800 | 596 | 96.8% | 96.9% | 96.6% | 0.819 | 0.777 | 0.677 | 203.9 | 6.0 | 83.4 | 44834 | 0.7 | 2.4 | 463.5 | 13730 |
| YX2-KS630-12 | 1600 | 494 | 95.8% | 96.2% | 96.1% | 0.824 | 0.787 | 0.693 | 117.0 | 5.0 | 45.3 | 30924 | 0.6 | 2.2 | 299.4 | 11130 |
| YX2-KS630-12 | 1800 | 495 | 96.0% | 96.3% | 96.2% | 0.821 | 0.780 | 0.681 | 131.9 | 5.5 | 53.1 | 34757 | 0.7 | 2.2 | 348.8 | 11880 |
| YX2-KS630-12 | 2000 | 495 | 96.1% | 96.3% | 96.1% | 0.810 | 0.760 | 0.650 | 148.4 | 6.0 | 65.4 | 38565 | 0.8 | 2.4 | 414.6 | 12880 |
| YX2-KS630-12 | 2240 | 495 | 96.2% | 96.5% | 96.2% | 0.814 | 0.766 | 0.659 | 165.2 | 5.5 | 71.1 | 43191 | 0.8 | 2.4 | 464.0 | 13670 |



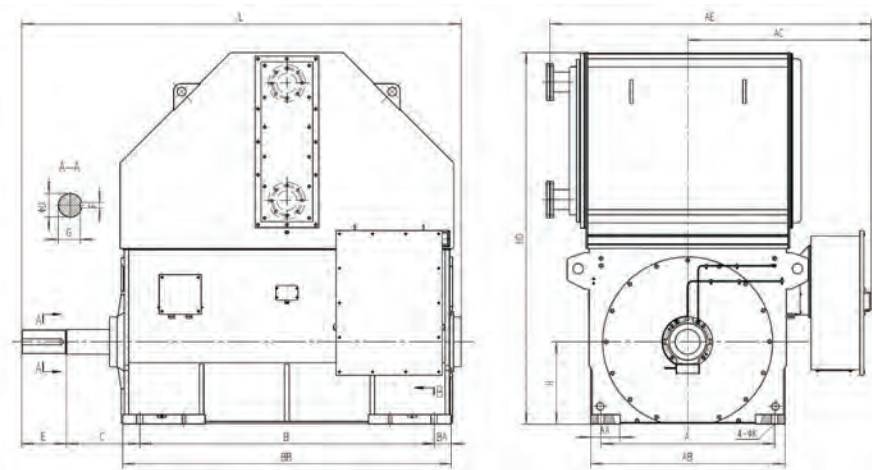
滚动 Rolling

| 中心高 | 极数 | A | AA | AB | B | BA | BB | C | D | E | F | G | K | L | AC | AD | HD |
|-----|----|------|-----|------|------|-----|------|-----|-----|-----|----|-----|----|------|------|------|------|
| 355 | ≥4 | 710 | 100 | 780 | 1120 | 150 | 1420 | 280 | 100 | 210 | 28 | 90 | 35 | 2380 | 975 | 1475 | 1470 |
| 400 | ≥4 | 750 | 150 | 880 | 1250 | 145 | 1540 | 280 | 110 | 210 | 28 | 100 | 35 | 2540 | 1025 | 1575 | 1530 |
| 450 | ≥4 | 850 | 150 | 980 | 1400 | 150 | 1700 | 280 | 120 | 210 | 32 | 109 | 42 | 2680 | 1075 | 1675 | 1725 |
| 500 | ≥4 | 950 | 150 | 1080 | 1600 | 150 | 1900 | 280 | 140 | 250 | 36 | 128 | 42 | 3140 | 1125 | 1775 | 1870 |
| 560 | 4 | 1180 | 200 | 1320 | 2000 | 115 | 2230 | 280 | 160 | 300 | 40 | 147 | 42 | 4075 | 1245 | 2065 | 2090 |
| 560 | ≥6 | 1180 | 200 | 1320 | 2000 | 115 | 2230 | 280 | 180 | 300 | 45 | 165 | 42 | 4075 | 1245 | 2065 | 2090 |
| 630 | 4 | 1400 | 200 | 1500 | 2240 | 115 | 2470 | 280 | 180 | 300 | 45 | 165 | 42 | 4285 | 1335 | 2245 | 2345 |
| 630 | ≥6 | 1400 | 200 | 1500 | 2240 | 115 | 2470 | 280 | 200 | 350 | 45 | 185 | 42 | 4335 | 1335 | 2245 | 2345 |



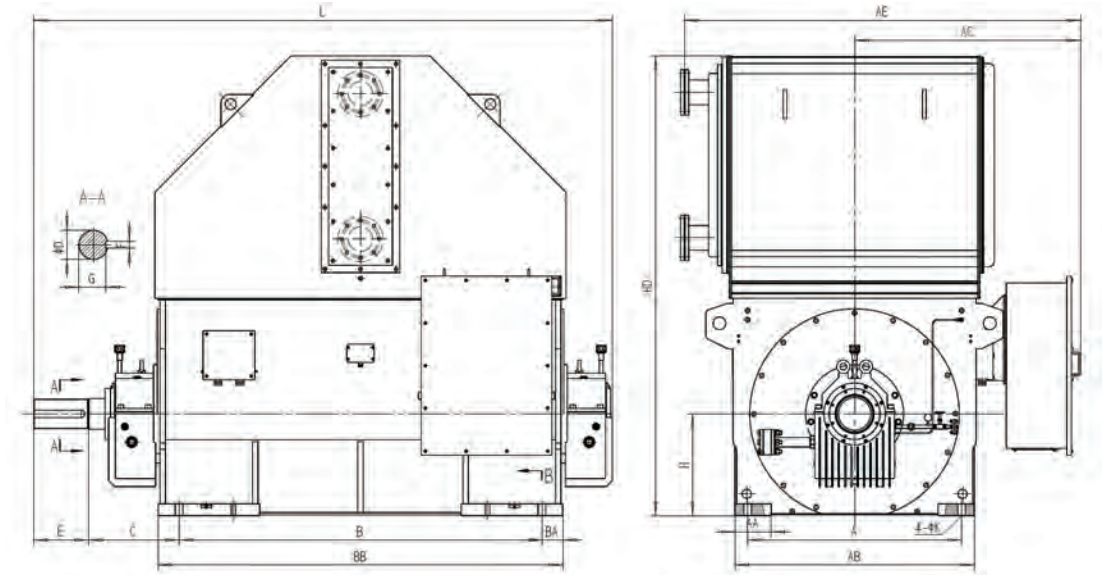
滑动
Sliding

| 中心高 | 极数 | A | AA | AB | B | BA | BB | C | D | E | F | G | K | L | AC | AD | HD |
|-----|----|------|-----|------|------|-----|------|-----|-----|-----|----|-----|----|------|------|------|------|
| 560 | 4 | 1180 | 200 | 1320 | 2000 | 115 | 2230 | 500 | 160 | 300 | 40 | 147 | 42 | 4295 | 1245 | 2065 | 2090 |
| 560 | ≥6 | 1180 | 200 | 1320 | 2000 | 115 | 2230 | 500 | 180 | 300 | 45 | 165 | 42 | 4295 | 1245 | 2065 | 2090 |
| 630 | 4 | 1400 | 200 | 1500 | 2240 | 115 | 2470 | 500 | 180 | 300 | 45 | 165 | 42 | 4505 | 1335 | 2245 | 2345 |
| 630 | ≥6 | 1400 | 200 | 1500 | 2240 | 115 | 2470 | 500 | 200 | 350 | 45 | 185 | 42 | 4555 | 1335 | 2245 | 2345 |



滚动
Rolling

| 中心高 | 极数 | A | AA | AB | B | BA | BB | C | D | E | F | G | K | L | AC | AD | HD |
|-----|----|------|-----|------|------|-----|------|-----|-----|-----|----|-----|----|------|------|------|------|
| 355 | ≥4 | 710 | 100 | 780 | 1120 | 150 | 1420 | 280 | 100 | 210 | 28 | 90 | 35 | 1840 | 975 | 1590 | 1750 |
| 400 | ≥4 | 750 | 150 | 880 | 1250 | 145 | 1540 | 280 | 110 | 210 | 28 | 100 | 35 | 1970 | 1025 | 1690 | 1840 |
| 450 | ≥4 | 850 | 150 | 980 | 1400 | 150 | 1700 | 280 | 120 | 210 | 32 | 109 | 42 | 2130 | 1075 | 1790 | 2180 |
| 500 | ≥4 | 950 | 150 | 1080 | 1600 | 150 | 1900 | 280 | 140 | 250 | 36 | 128 | 42 | 2380 | 1125 | 1890 | 2195 |
| 560 | 4 | 1180 | 200 | 1320 | 2000 | 115 | 2230 | 280 | 160 | 300 | 40 | 147 | 42 | 2780 | 1245 | 2245 | 2540 |
| 560 | ≥6 | 1180 | 200 | 1320 | 2000 | 115 | 2230 | 280 | 180 | 300 | 45 | 165 | 42 | 2780 | 1245 | 2245 | 2540 |
| 630 | 4 | 1400 | 200 | 1500 | 2240 | 115 | 2470 | 280 | 180 | 300 | 45 | 165 | 42 | 3020 | 1335 | 2425 | 2690 |
| 630 | ≥6 | 1400 | 200 | 1500 | 2240 | 115 | 2470 | 280 | 200 | 350 | 45 | 185 | 42 | 3080 | 1335 | 2425 | 2690 |



滑动
Sliding

| 中心高 | 极数 | A | AA | AB | B | BA | BB | C | D | E | F | G | K | L | AC | AD | HD |
|-----|----|------|-----|------|------|-----|------|-----|-----|-----|----|-----|----|------|------|------|------|
| 560 | 4 | 1180 | 200 | 1320 | 2000 | 115 | 2230 | 500 | 160 | 300 | 40 | 147 | 42 | 3200 | 1245 | 2245 | 2540 |
| 560 | ≥6 | 1180 | 200 | 1320 | 2000 | 115 | 2230 | 500 | 180 | 300 | 45 | 165 | 42 | 3200 | 1245 | 2245 | 2540 |
| 630 | 4 | 1400 | 200 | 1500 | 2240 | 115 | 2470 | 500 | 180 | 300 | 45 | 165 | 42 | 3450 | 1335 | 2425 | 2690 |
| 630 | ≥6 | 1400 | 200 | 1500 | 2240 | 115 | 2470 | 500 | 200 | 350 | 45 | 185 | 42 | 3500 | 1335 | 2425 | 2690 |

感谢您使用本公司电动机产品!
Thank you for using our electric motors!